



### Park Land

- Greenway Trail North (Phase 1)
- Community Garden
- Nutro Dog Park
- Greenway Trail South (Future Phase 2)
- Preservation Park
- L&N Caboose
- Sarah Benson Park
- Alexander Trail
- Heritage Park
- Soccer Fields

### Religious Institutions

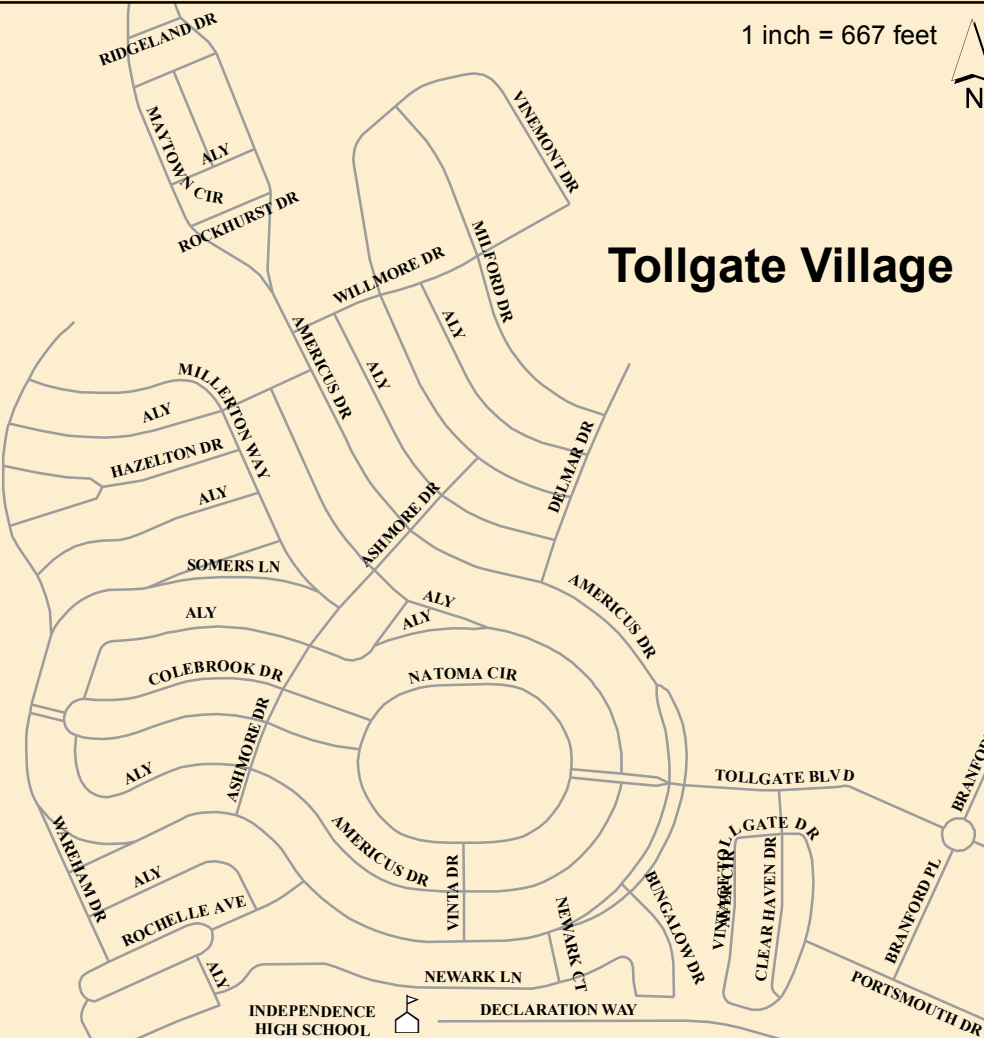
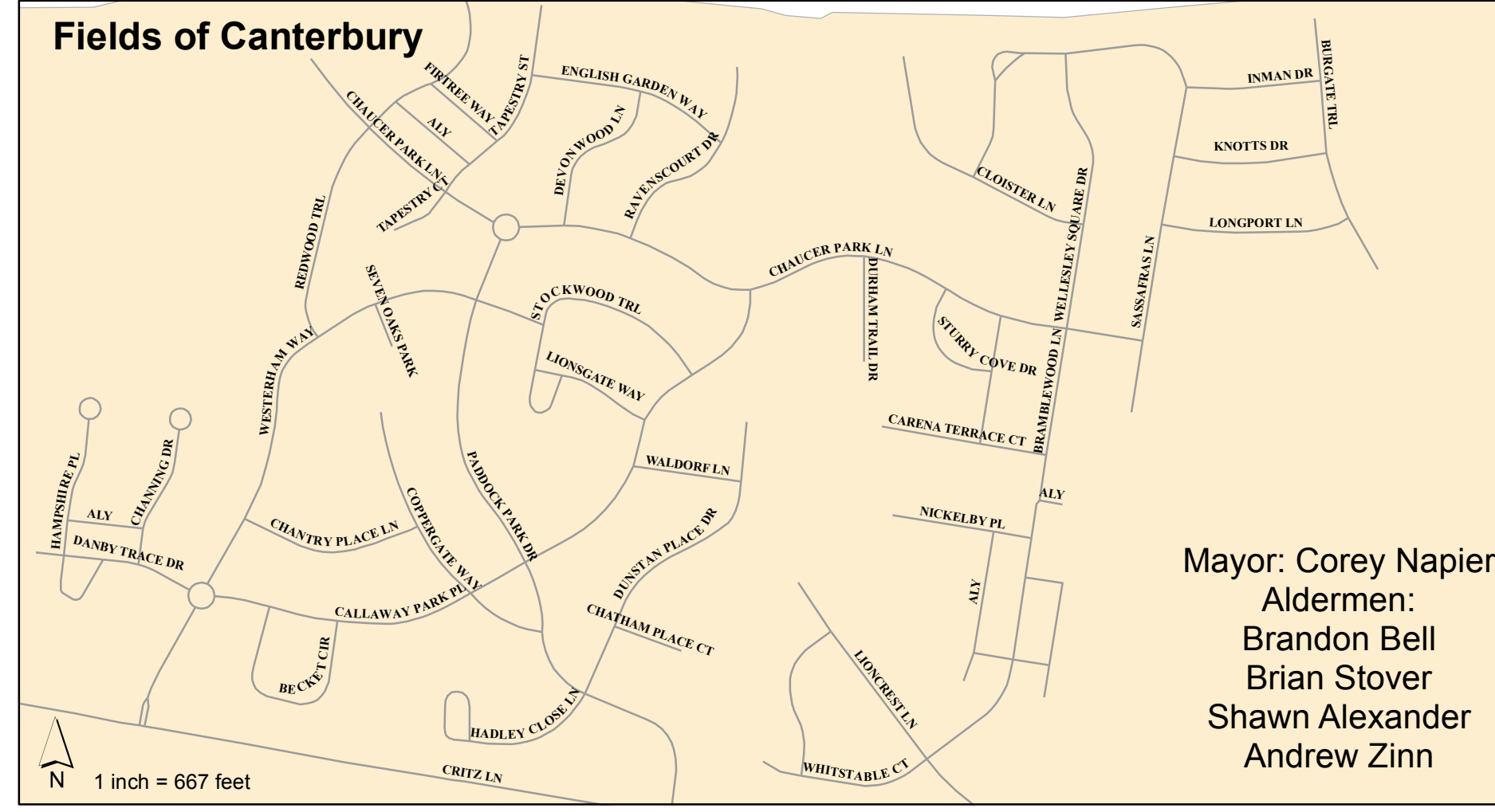
- Evergreen Primitive Baptist Church
- Thompson's Station United Methodist Church
- Thompson's Station Church of Christ
- Thompson's Station Baptist Church
- Connection Hill Primitive Baptist Church
- Cowles Chapel United Methodist Church
- Graceland Community Church

### Government Facilities

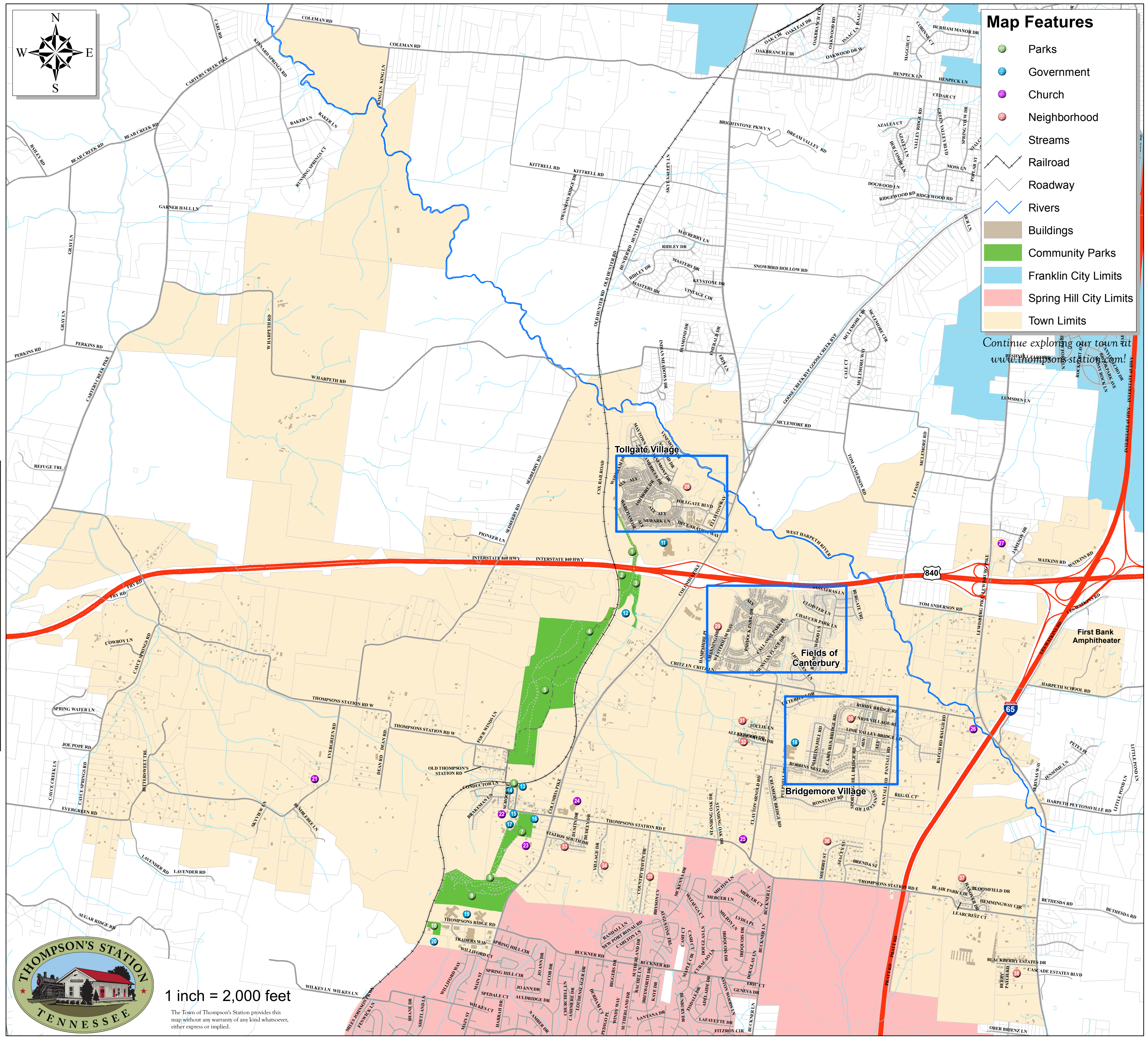
- Independence High School
- Regional Wastewater Treatment Facility
- Thompson's Station Town Hall
- Thompson's Station Community Center
- Williamson County Rescue Squad
- Thompson's Station Post Office
- Williamson County Convenience Center
- Thompson's Station Elementary/Middle School
- Heritage Elementary/Middle School
- Heritage Wastewater Treatment Facility

### Neighborhoods

- Tollgate Village
- Fields of Canterbury
- Bridgemore Village
- The Pines
- Allenwood
- Station South
- The Village
- Country Haven
- Pecan Hills
- Arbor Lakes
- Blackberry Estates



Mayor: Corey Napier  
 Aldermen:  
 Brandon Bell  
 Brian Stover  
 Shawn Alexander  
 Andrew Zinn



1 inch = 2,000 feet  
 The Town of Thompson's Station provides this map without any warranty of any kind whatsoever, either express or implied.

- #### Map Features
- Parks
  - Government
  - Church
  - Neighborhood
  - Streams
  - Railroad
  - Roadway
  - Rivers
  - Buildings
  - Community Parks
  - Franklin City Limits
  - Spring Hill City Limits
  - Town Limits

Continue exploring our town at [www.thompsonstation.com](http://www.thompsonstation.com)!