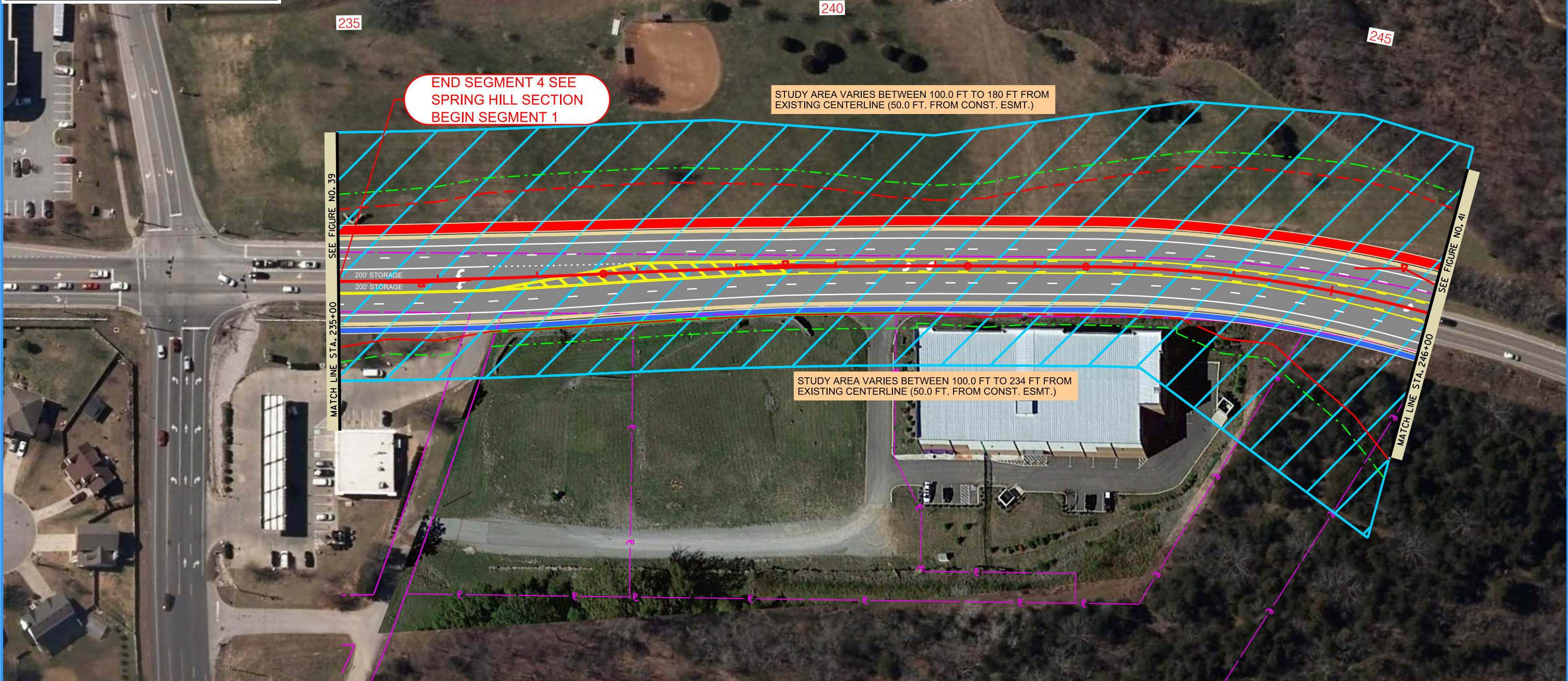
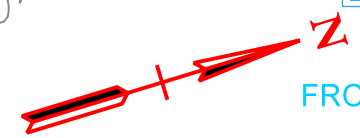


**LEGEND**

- PRES. RIGHT-OF-WAY
- PROPERTY LINE
- PROP. RETAINING WALL
- PROP. RIGHT-OF-WAY & EASEMENTS
- SLOPE LINES
- ENVIRONMENTAL TECHNICAL STUDY AREA



1/25/2021 2:26:21 PM  
c:\p\w\work\codispw\johnr\ehm\dms52098\ETSA\_040.sht



**ENVIRONMENTAL TECHNICAL STUDY AREA**  
SR-6 (US-31, COLUMBIA PIKE)  
FROM DUPLEX ROAD IN SPRING HILL TO NEAR TOLLGATE BLVD IN THOMPSON'S STATION  
MAURY-WILLIAMSON COUNTIES

STATE OF TENNESSEE  
DEPARTMENT OF TRANSPORTATION  
STRATEGIC TRANSPORTATION  
INVESTMENTS DIVISION

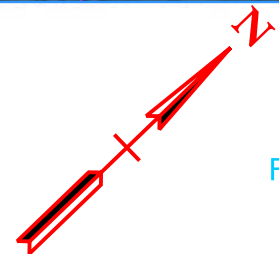
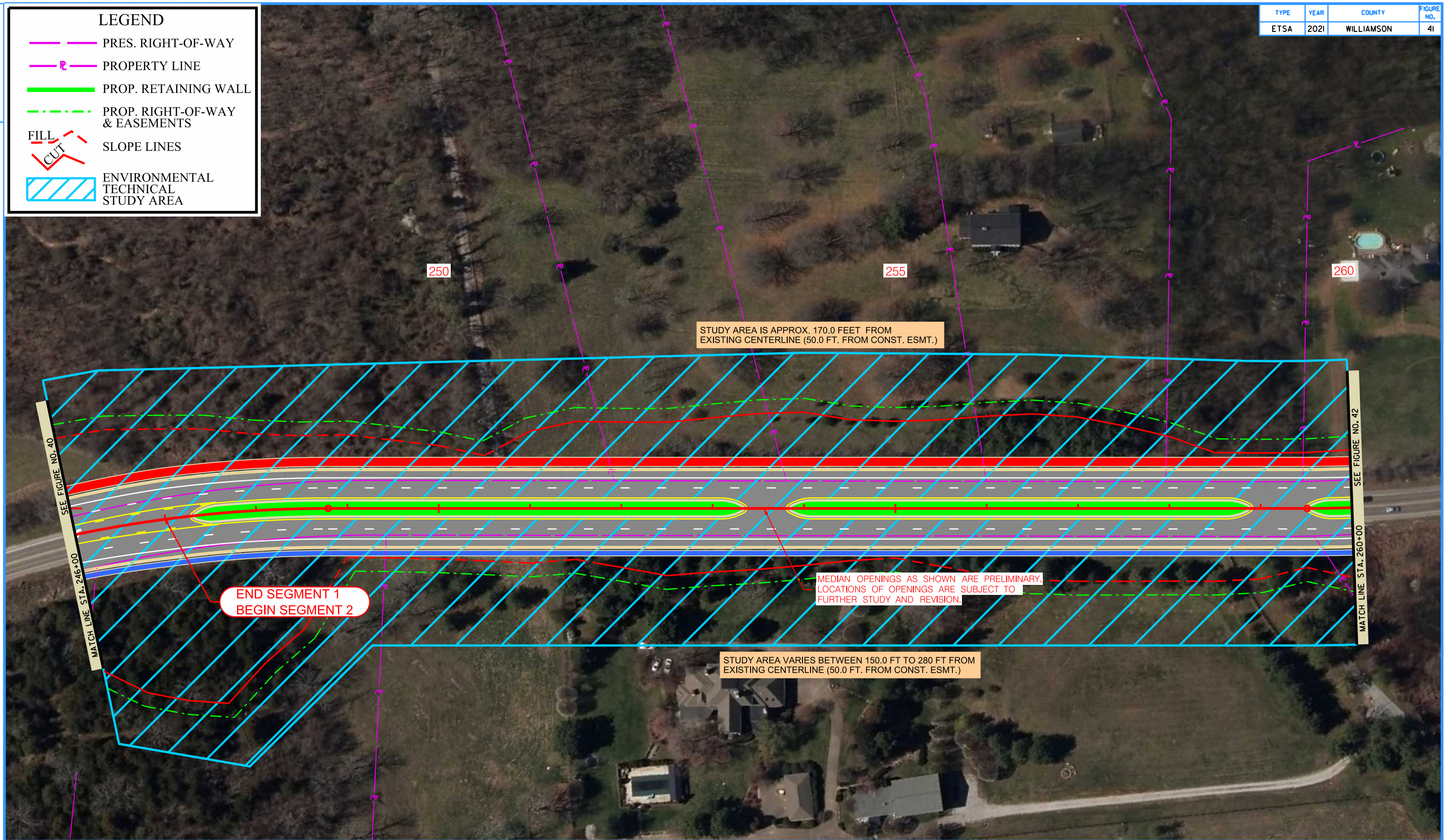
**CONCEPTUAL LAYOUT**  
STA. 235+00  
TO  
STA. 246+00



TYPE	YEAR	COUNTY	FIGURE NO.
ETSA	2021	WILLIAMSON	41

**LEGEND**

- PRES. RIGHT-OF-WAY
- PROPERTY LINE
- PROP. RETAINING WALL
- PROP. RIGHT-OF-WAY & EASEMENTS
- SLOPE LINES
- ENVIRONMENTAL TECHNICAL STUDY AREA

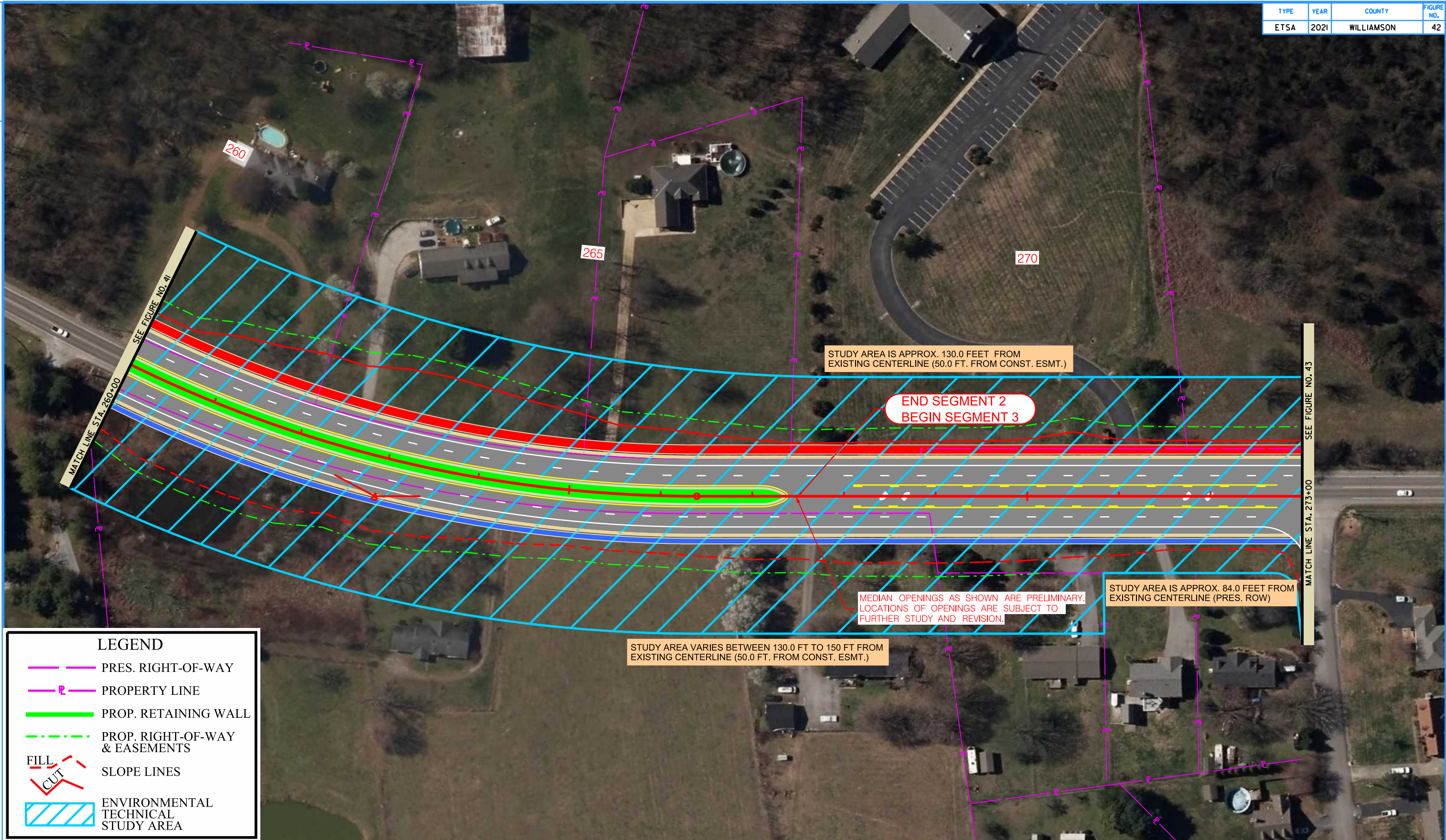


**ENVIRONMENTAL TECHNICAL STUDY AREA**  
SR-6 (US-31, COLUMBIA PIKE)  
FROM DUPLEX ROAD IN SPRING HILL TO NEAR TOLLGATE BLVD IN THOMPSON'S STATION  
MAURY-WILLIAMSON COUNTIES

STATE OF TENNESSEE  
DEPARTMENT OF TRANSPORTATION  
STRATEGIC TRANSPORTATION  
INVESTMENTS DIVISION

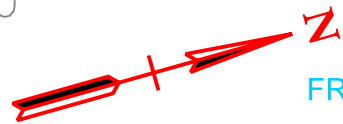
**CONCEPTUAL LAYOUT**  
STA. 246+00  
TO  
STA. 260+00





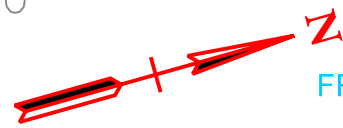
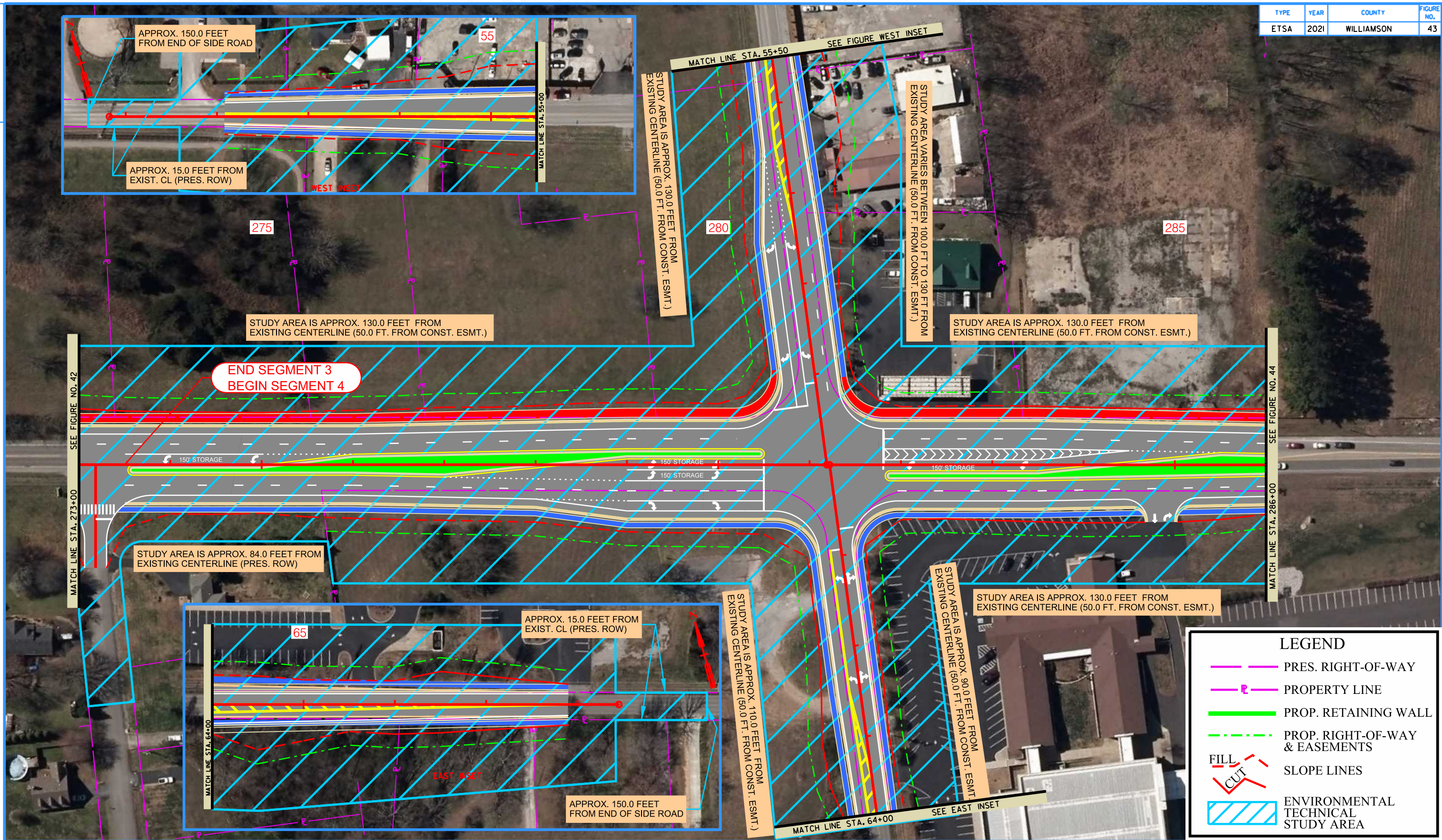
**LEGEND**

- PRES. RIGHT-OF-WAY
- PROPERTY LINE
- PROP. RETAINING WALL
- PROP. RIGHT-OF-WAY & EASEMENTS
- SLOPE LINES
- ENVIRONMENTAL TECHNICAL STUDY AREA



**ENVIRONMENTAL TECHNICAL STUDY AREA**  
SR-6 (US-31, COLUMBIA PIKE)  
FROM DUPLEX ROAD IN SPRING HILL TO NEAR TOLLGATE BLVD IN THOMPSON'S STATION  
MAURY-WILLIAMSON COUNTIES



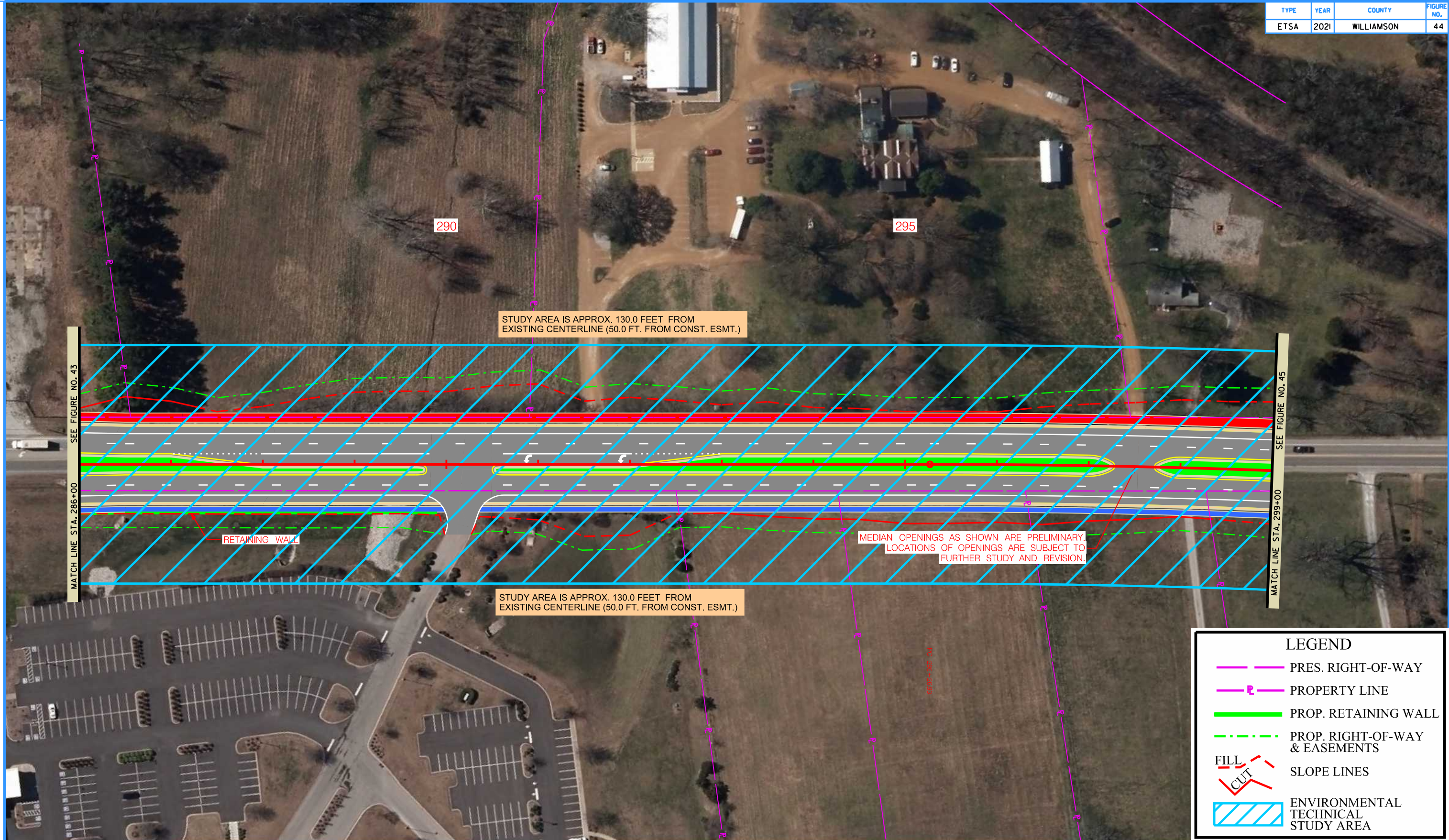


**ENVIRONMENTAL TECHNICAL STUDY AREA**  
SR-6 (US-31, COLUMBIA PIKE)  
FROM DUPLEX ROAD IN SPRING HILL TO NEAR TOLLGATE BLVD IN THOMPSON'S STATION  
MAURY-WILLIAMSON COUNTIES

LEGEND	
	PRES. RIGHT-OF-WAY
	PROPERTY LINE
	PROP. RETAINING WALL
	PROP. RIGHT-OF-WAY & EASEMENTS
	SLOPE LINES
	ENVIRONMENTAL TECHNICAL STUDY AREA

STATE OF TENNESSEE  
DEPARTMENT OF TRANSPORTATION  
STRATEGIC TRANSPORTATION  
INVESTMENTS DIVISION  
**CONCEPTUAL LAYOUT**  
STA. 273+00  
TO  
STA. 286+00



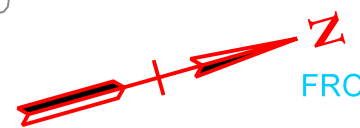


**LEGEND**

- PRES. RIGHT-OF-WAY
- PROPERTY LINE
- PROP. RETAINING WALL
- PROP. RIGHT-OF-WAY & EASEMENTS
- SLOPE LINES
- ENVIRONMENTAL TECHNICAL STUDY AREA

**FILL**  
**CUT**

1/25/2021 2:27:49 PM  
c:\p\work\codispw\johnr\ehm\dms2098\ETSA\_044.sht



**ENVIRONMENTAL TECHNICAL STUDY AREA**  
SR-6 (US-31, COLUMBIA PIKE)  
FROM DUPLEX ROAD IN SPRING HILL TO NEAR TOLLGATE BLVD IN THOMPSON'S STATION  
MAURY-WILLIAMSON COUNTIES

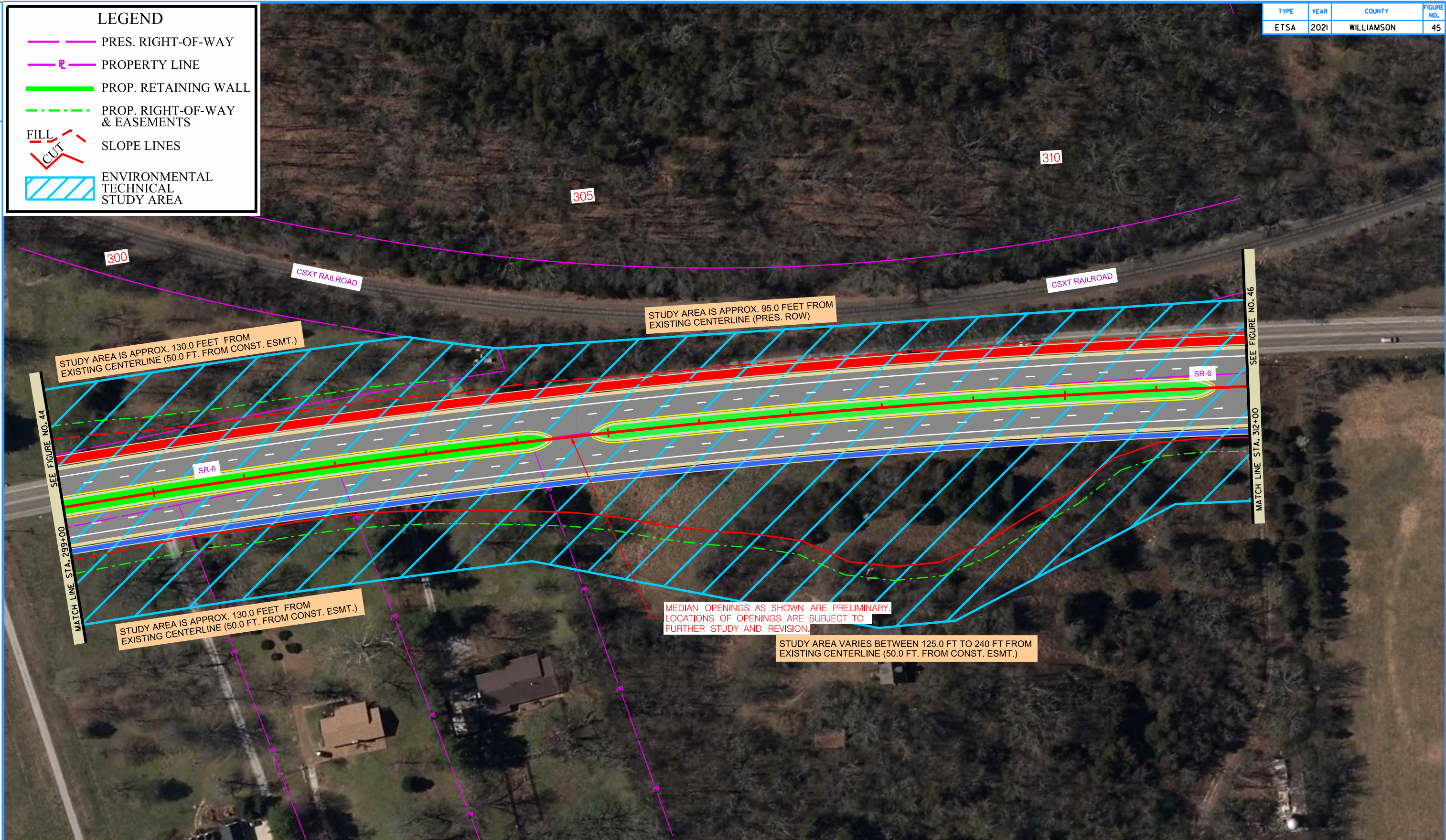
STATE OF TENNESSEE  
DEPARTMENT OF TRANSPORTATION  
STRATEGIC TRANSPORTATION  
INVESTMENTS DIVISION

**CONCEPTUAL LAYOUT**  
STA. 286+00  
TO  
STA. 299+00

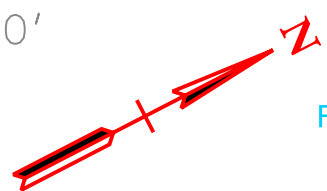


**LEGEND**

- PRES. RIGHT-OF-WAY
- PROPERTY LINE
- PROP. RETAINING WALL
- PROP. RIGHT-OF-WAY & EASEMENTS
- SLOPE LINES
- FILL / CUT
- ENVIRONMENTAL TECHNICAL STUDY AREA



1/25/2021 2:28:02 PM  
c:\p\work\codispw\johnr\ehm\dms52098\ETSA\_045.sht

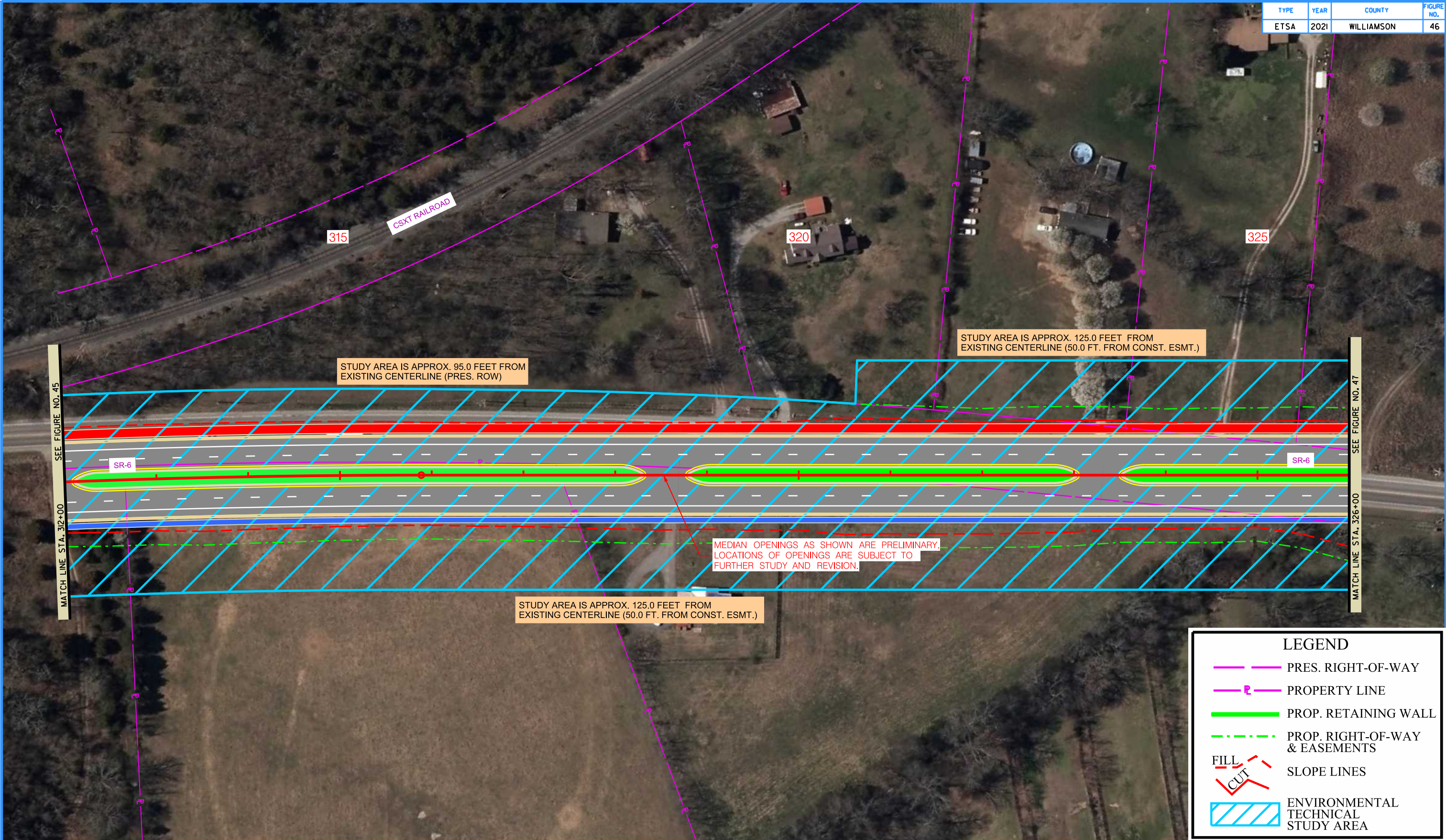


**ENVIRONMENTAL TECHNICAL STUDY AREA**  
SR-6 (US-31, COLUMBIA PIKE)  
FROM DUPLEX ROAD IN SPRING HILL TO NEAR TOLLGATE BLVD IN THOMPSON'S STATION  
MAURY-WILLIAMSON COUNTIES

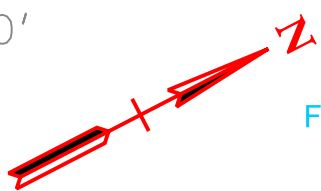
STATE OF TENNESSEE  
DEPARTMENT OF TRANSPORTATION  
STRATEGIC TRANSPORTATION  
INVESTMENTS DIVISION

**CONCEPTUAL LAYOUT**  
STA. 299+00  
TO  
STA. 312+00





LEGEND	
	PRES. RIGHT-OF-WAY
	PROPERTY LINE
	PROP. RETAINING WALL
	PROP. RIGHT-OF-WAY & EASEMENTS
	SLOPE LINES
	ENVIRONMENTAL TECHNICAL STUDY AREA



**ENVIRONMENTAL TECHNICAL STUDY AREA**  
SR-6 (US-31, COLUMBIA PIKE)  
FROM DUPLEX ROAD IN SPRING HILL TO NEAR TOLLGATE BLVD IN THOMPSON'S STATION  
MAURY-WILLIAMSON COUNTIES

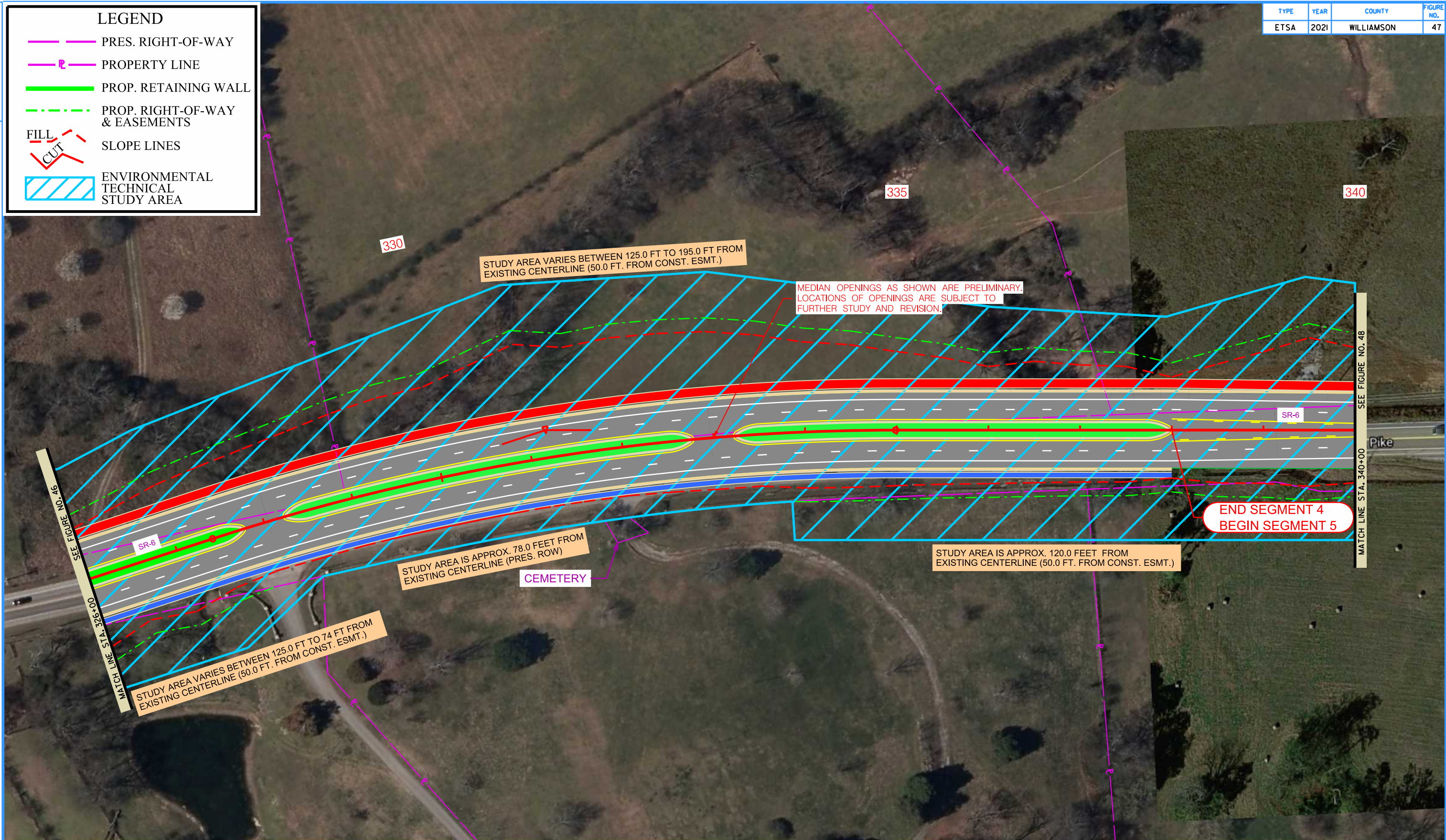
STATE OF TENNESSEE  
DEPARTMENT OF TRANSPORTATION  
STRATEGIC TRANSPORTATION  
INVESTMENTS DIVISION

**CONCEPTUAL LAYOUT**  
STA. 312+00  
TO  
STA. 326+00



**LEGEND**

- PRES. RIGHT-OF-WAY
- PROPERTY LINE
- PROP. RETAINING WALL
- PROP. RIGHT-OF-WAY & EASEMENTS
- SLOPE LINES
- ENVIRONMENTAL TECHNICAL STUDY AREA



1/25/2021 2:28:31 PM  
c:\p\work\codispw\johnr\ehm\dms52098\ETSA\_047.sht







**ENVIRONMENTAL TECHNICAL STUDY AREA**  
SR-6 (US-31, COLUMBIA PIKE)  
FROM DUPLEX ROAD IN SPRING HILL TO NEAR TOLLGATE BLVD IN THOMPSON'S STATION  
MAURY-WILLIAMSON COUNTIES


STATE OF TENNESSEE  
DEPARTMENT OF TRANSPORTATION  
STRATEGIC TRANSPORTATION  
INVESTMENTS DIVISION


**CONCEPTUAL LAYOUT**  
STA. 326+00  
TO  
STA. 340+00

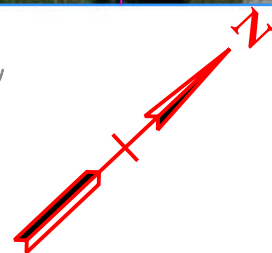
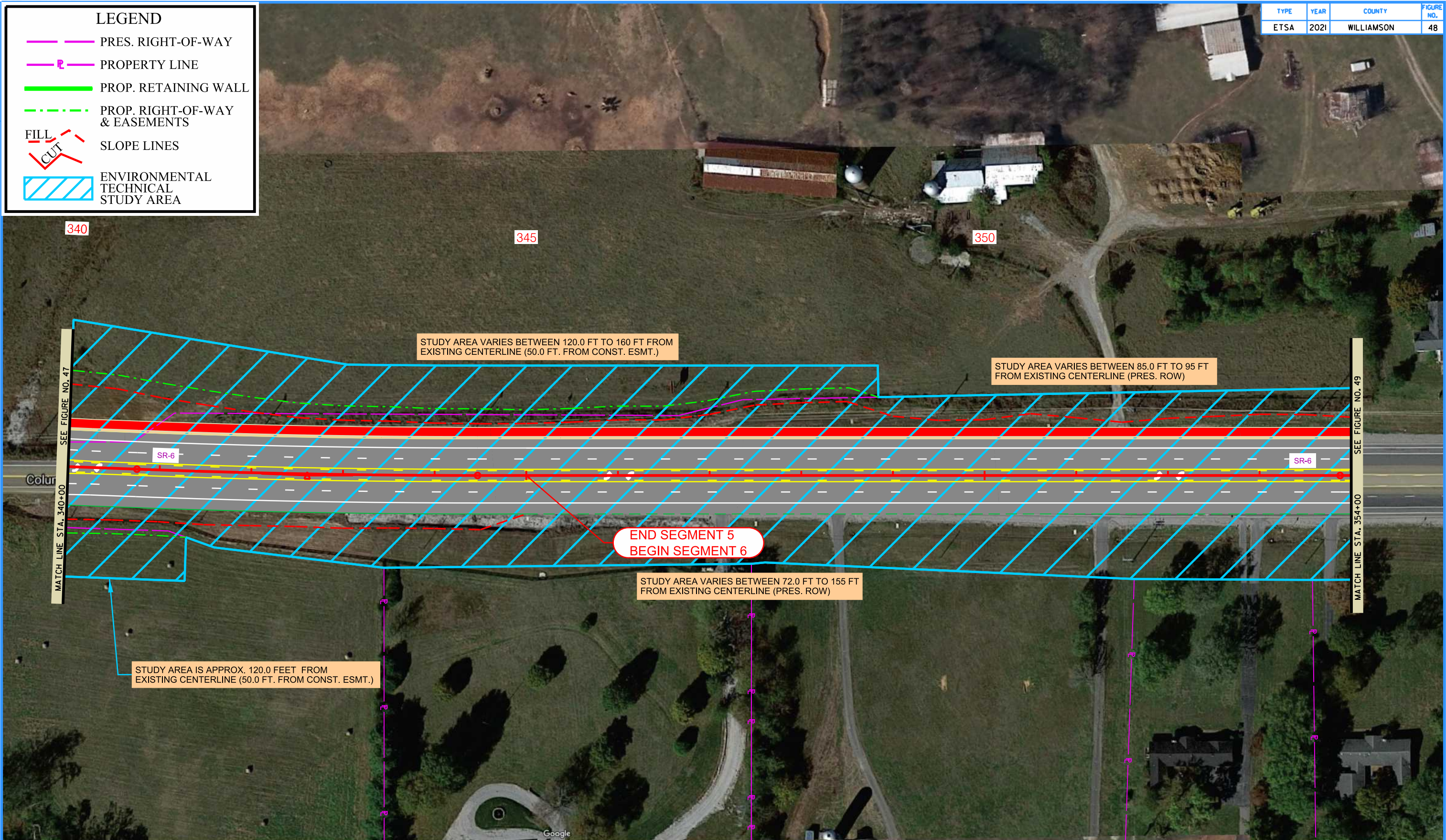


**LEGEND**

-  PRES. RIGHT-OF-WAY
-  PROPERTY LINE
-  PROP. RETAINING WALL
-  PROP. RIGHT-OF-WAY & EASEMENTS
-  SLOPE LINES
-  ENVIRONMENTAL TECHNICAL STUDY AREA

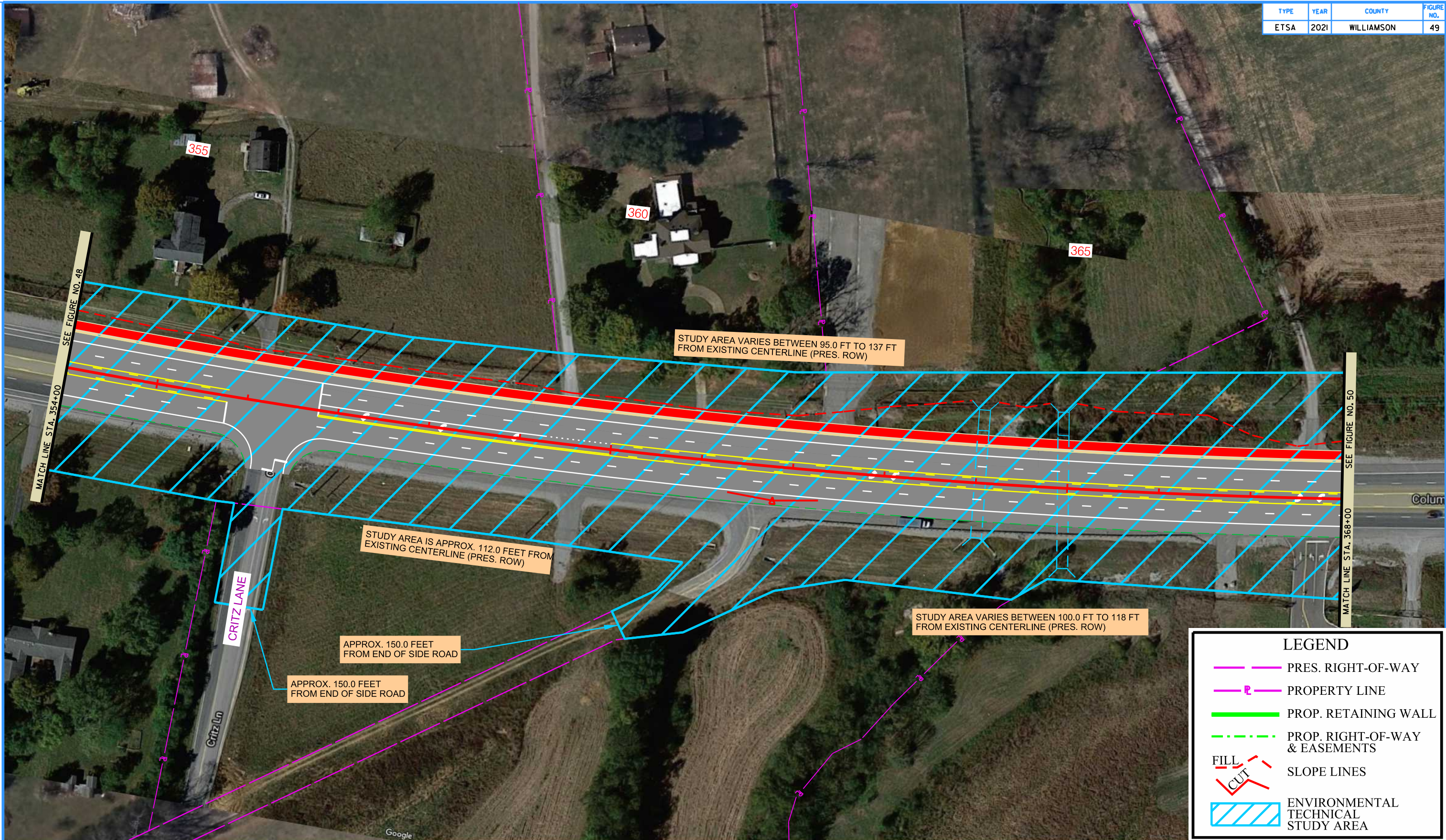
**FILL**  


**CUT**  




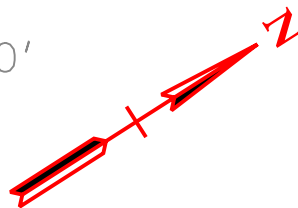
**ENVIRONMENTAL TECHNICAL STUDY AREA**  
SR-6 (US-31, COLUMBIA PIKE)  
FROM DUPLEX ROAD IN SPRING HILL TO NEAR TOLLGATE BLVD IN THOMPSON'S STATION  
MAURY-WILLIAMSON COUNTIES





**LEGEND**

- PRES. RIGHT-OF-WAY
- PROPERTY LINE
- PROP. RETAINING WALL
- PROP. RIGHT-OF-WAY & EASEMENTS
- SLOPE LINES
- ENVIRONMENTAL TECHNICAL STUDY AREA



**ENVIRONMENTAL TECHNICAL STUDY AREA**  
SR-6 (US-31, COLUMBIA PIKE)  
FROM DUPLEX ROAD IN SPRING HILL TO NEAR TOLLGATE BLVD IN THOMPSON'S STATION  
MAURY-WILLIAMSON COUNTIES

STATE OF TENNESSEE  
DEPARTMENT OF TRANSPORTATION  
STRATEGIC TRANSPORTATION  
INVESTMENTS DIVISION

**CONCEPTUAL LAYOUT**  
STA. 354+00  
TO  
STA. 368+00



TYPE	YEAR	COUNTY	FIGURE NO.
ETSA	2021	WILLIAMSON	50

**LEGEND**

- PRES. RIGHT-OF-WAY
- PROPERTY LINE
- PROP. RETAINING WALL
- PROP. RIGHT-OF-WAY & EASEMENTS
- SLOPE LINES
- ENVIRONMENTAL TECHNICAL STUDY AREA

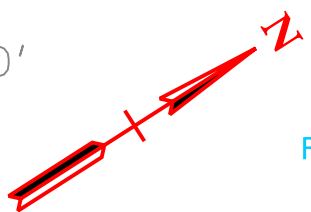


STUDY AREA IS APPROX. 140.0 FEET FROM EXISTING CENTERLINE (PRES. ROW)

STUDY AREA VARIES BETWEEN 75.0 FT TO 190 FT FROM EXISTING CENTERLINE (PRES. ROW)

MATCH LINE STA. 368+00 SEE FIGURE NO. 49

MATCH LINE STA. 381+00 SEE FIGURE NO. 51



**ENVIRONMENTAL TECHNICAL STUDY AREA**  
SR-6 (US-31, COLUMBIA PIKE)  
FROM DUPLEX ROAD IN SPRING HILL TO NEAR TOLLGATE BLVD IN THOMPSON'S STATION  
MAURY-WILLIAMSON COUNTIES

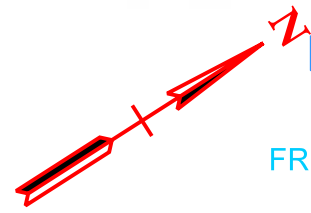
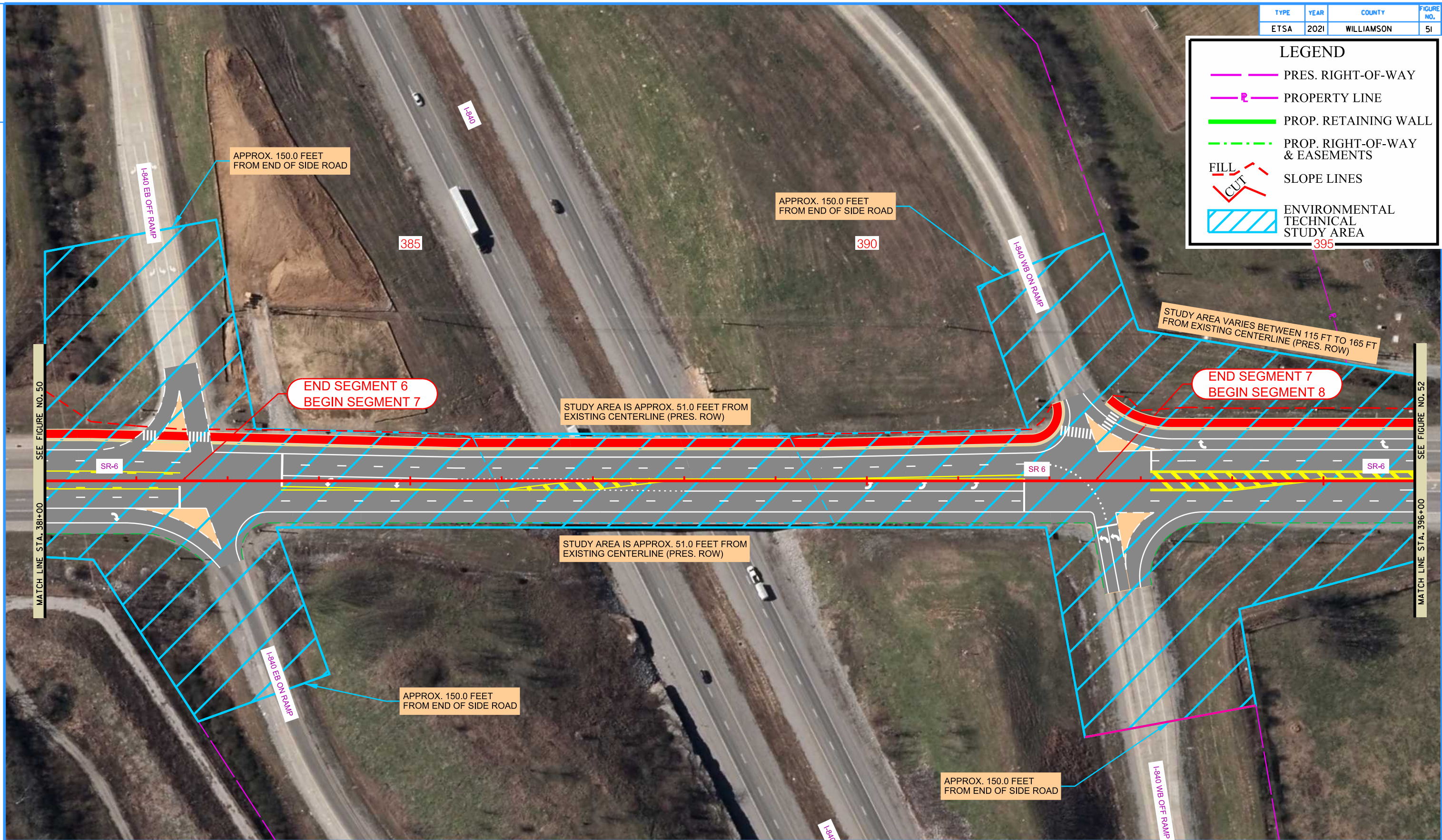
STATE OF TENNESSEE  
DEPARTMENT OF TRANSPORTATION  
STRATEGIC TRANSPORTATION  
INVESTMENTS DIVISION  
**CONCEPTUAL LAYOUT**  
STA. 368+00  
TO  
STA. 381+00



TYPE	YEAR	COUNTY	FIGURE NO.
ETSA	2021	WILLIAMSON	5I

**LEGEND**

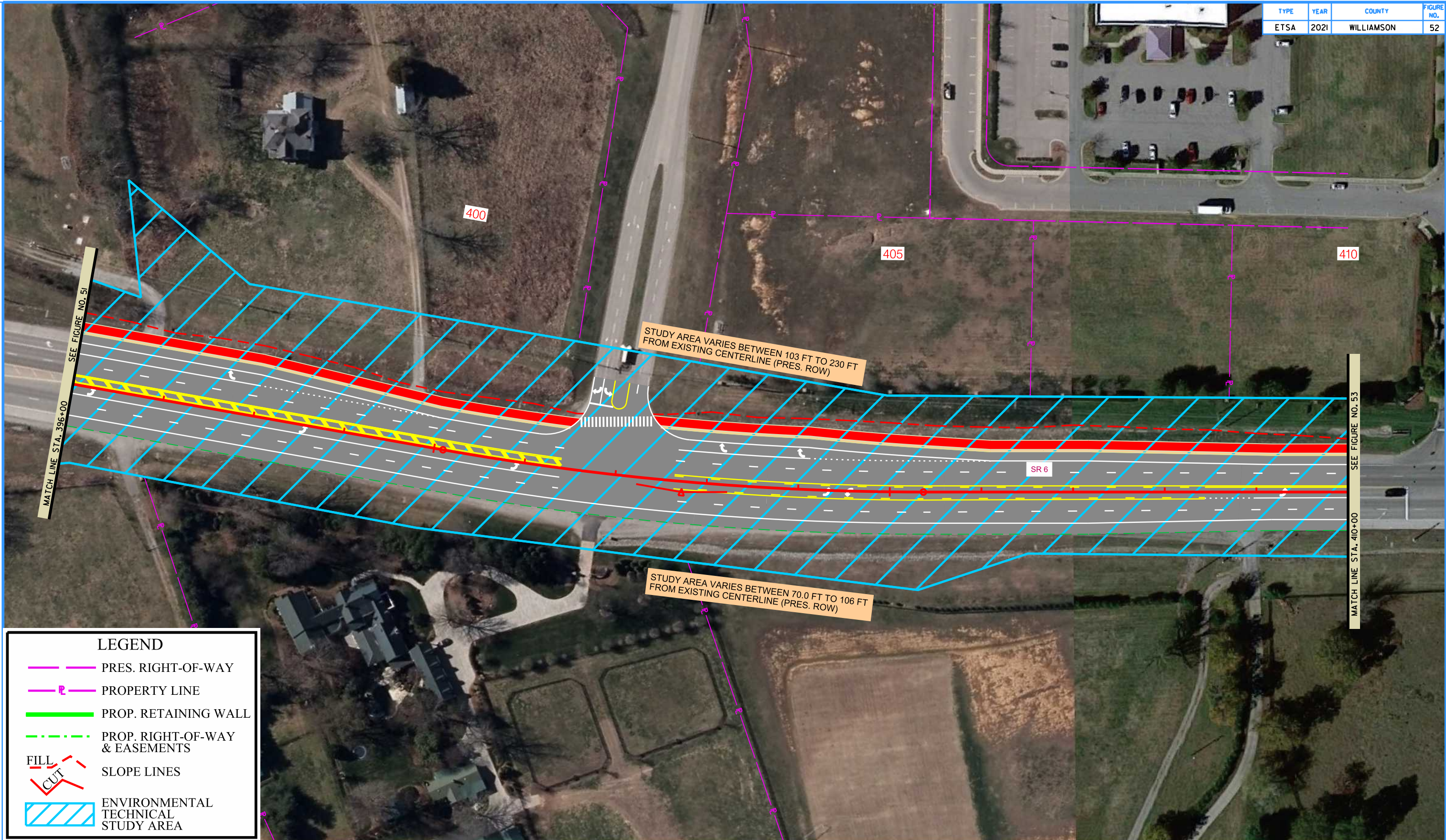
- PRES. RIGHT-OF-WAY
- PROPERTY LINE
- PROP. RETAINING WALL
- PROP. RIGHT-OF-WAY & EASEMENTS
- SLOPE LINES
- FILL / CUT
- ENVIRONMENTAL TECHNICAL STUDY AREA



**ENVIRONMENTAL TECHNICAL STUDY AREA**  
SR-6 (US-31, COLUMBIA PIKE)  
FROM DUPLEX ROAD IN SPRING HILL TO NEAR TOLLGATE BLVD IN THOMPSON'S STATION  
MAURY-WILLIAMSON COUNTIES

STATE OF TENNESSEE  
DEPARTMENT OF TRANSPORTATION  
STRATEGIC TRANSPORTATION  
INVESTMENTS DIVISION  
**CONCEPTUAL LAYOUT**  
STA. 381+00  
TO  
STA. 396+00





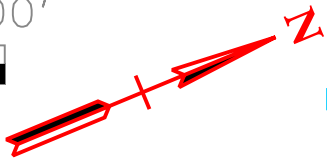
STUDY AREA VARIES BETWEEN 103 FT TO 230 FT FROM EXISTING CENTERLINE (PRES. ROW)

STUDY AREA VARIES BETWEEN 70.0 FT TO 106 FT FROM EXISTING CENTERLINE (PRES. ROW)

**LEGEND**

- PRES. RIGHT-OF-WAY
- PROPERTY LINE
- PROP. RETAINING WALL
- PROP. RIGHT-OF-WAY & EASEMENTS
- SLOPE LINES
- ENVIRONMENTAL TECHNICAL STUDY AREA

**FILL**  
 CUT

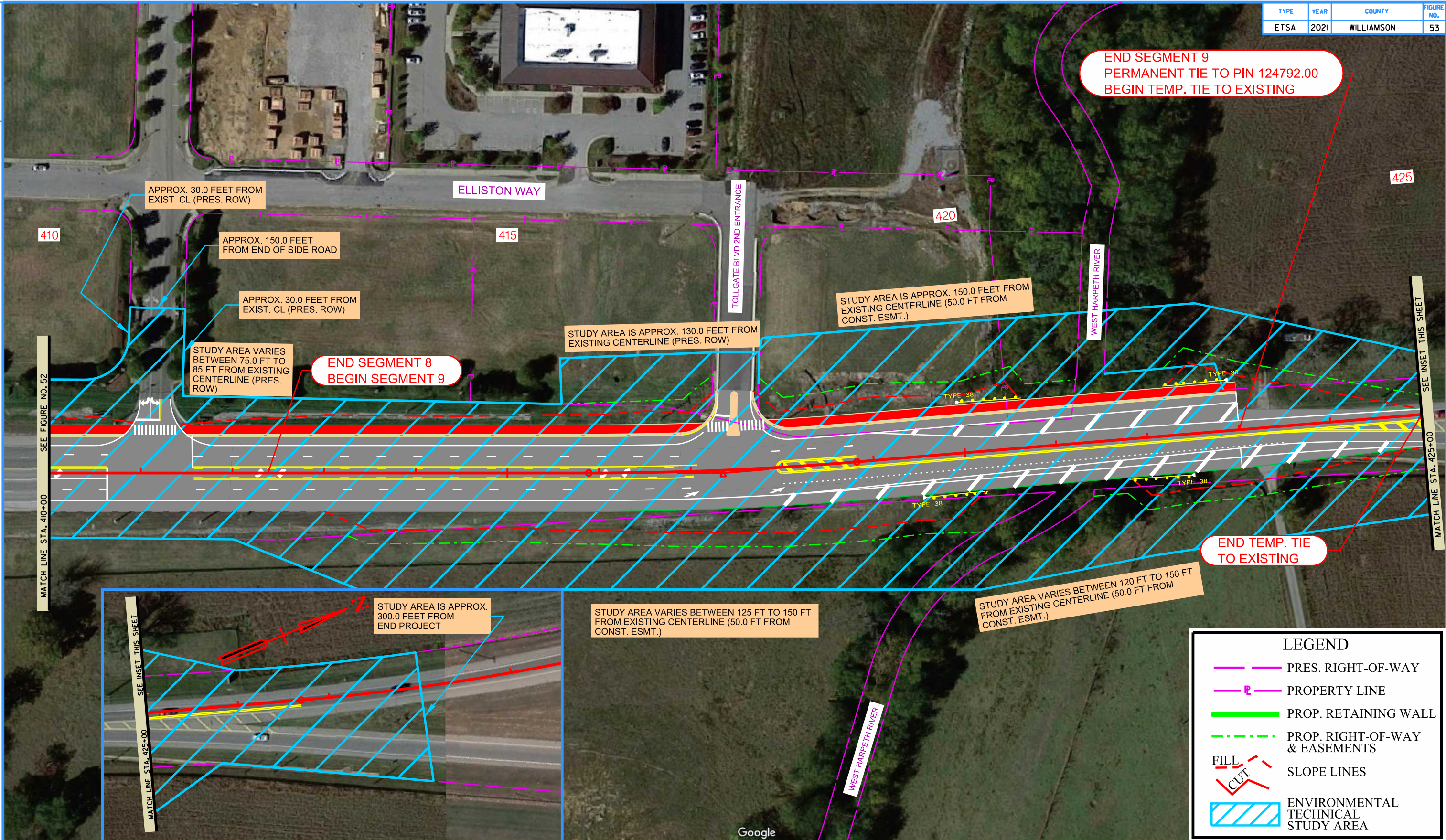


**ENVIRONMENTAL TECHNICAL STUDY AREA**  
SR-6 (US-31, COLUMBIA PIKE)  
FROM DUPLEX ROAD IN SPRING HILL TO NEAR TOLLGATE BLVD IN THOMPSON'S STATION  
MAURY-WILLIAMSON COUNTIES

STATE OF TENNESSEE  
DEPARTMENT OF TRANSPORTATION  
STRATEGIC TRANSPORTATION  
INVESTMENTS DIVISION

**CONCEPTUAL LAYOUT**  
STA. 396+00  
TO  
STA. 410+00



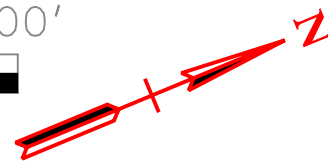


MATCH LINE STA. 410+00 SEE FIGURE NO. 52

MATCH LINE STA. 425+00 SEE INSET THIS SHEET

MATCH LINE STA. 425+00 SEE INSET THIS SHEET

LEGEND	
	PRES. RIGHT-OF-WAY
	PROPERTY LINE
	PROP. RETAINING WALL
	PROP. RIGHT-OF-WAY & EASEMENTS
	SLOPE LINES
	ENVIRONMENTAL TECHNICAL STUDY AREA



## ENVIRONMENTAL TECHNICAL STUDY AREA

SR-6 (US-31, COLUMBIA PIKE)  
FROM DUPLEX ROAD IN SPRING HILL TO NEAR TOLLGATE BLVD IN THOMPSON'S STATION  
MAURY-WILLIAMSON COUNTIES

STATE OF TENNESSEE  
DEPARTMENT OF TRANSPORTATION  
STRATEGIC TRANSPORTATION  
INVESTMENTS DIVISION

**CONCEPTUAL LAYOUT**  
STA. 410+00  
TO  
STA. 419+00