

**Town of Thompson's Station  
Board of Mayor and Aldermen  
Work Session Meeting 6:00 p.m.  
March 9, 2021**

**1. Discussion Of 2021 Transportation Updates:**

- a. Major Thoroughfare Plan Updates.
- b. Thompson's Station & Spring Hill Transportation Coordination.
- c. TDOT Draft Plans for Highway 31 Widening.

Documents:

[ITEM 1 - 2021 TRANSPORTATION UPDATES 2021.PDF](#)

*This meeting will be held remotely due to the Public Health Emergency related to COVID-19 & will be live-streamed via our website at [www.thompsons-station.com](http://www.thompsons-station.com)*



## GENERAL PLAN FOR THOMPSON'S STATION



Picture courtesy of Thompson's Station Battlefield Association

## TOWN OF THOMPSON'S STATION MAJOR THOROUGHFARE PLAN

Prepared for:



Town of Thompson's Station, Tennessee  
1550 Thompson's Station Road West  
Thompson's Station, TN 37179

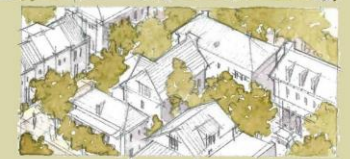
Prepared by:



615 3<sup>rd</sup> Avenue South, Suite 700  
Nashville, Tennessee 37210  
Phone: 615.254.1500 | Fax: 615.255.6572  
www.bargedesign.com

(File No. 36727-13)

Adopted August 27, 2019



**Thompson's Station, Tennessee**  
Land Development Ordinance  
10 SEP 2015  
Amendments 12 NOV 2019

# Transportation Updates

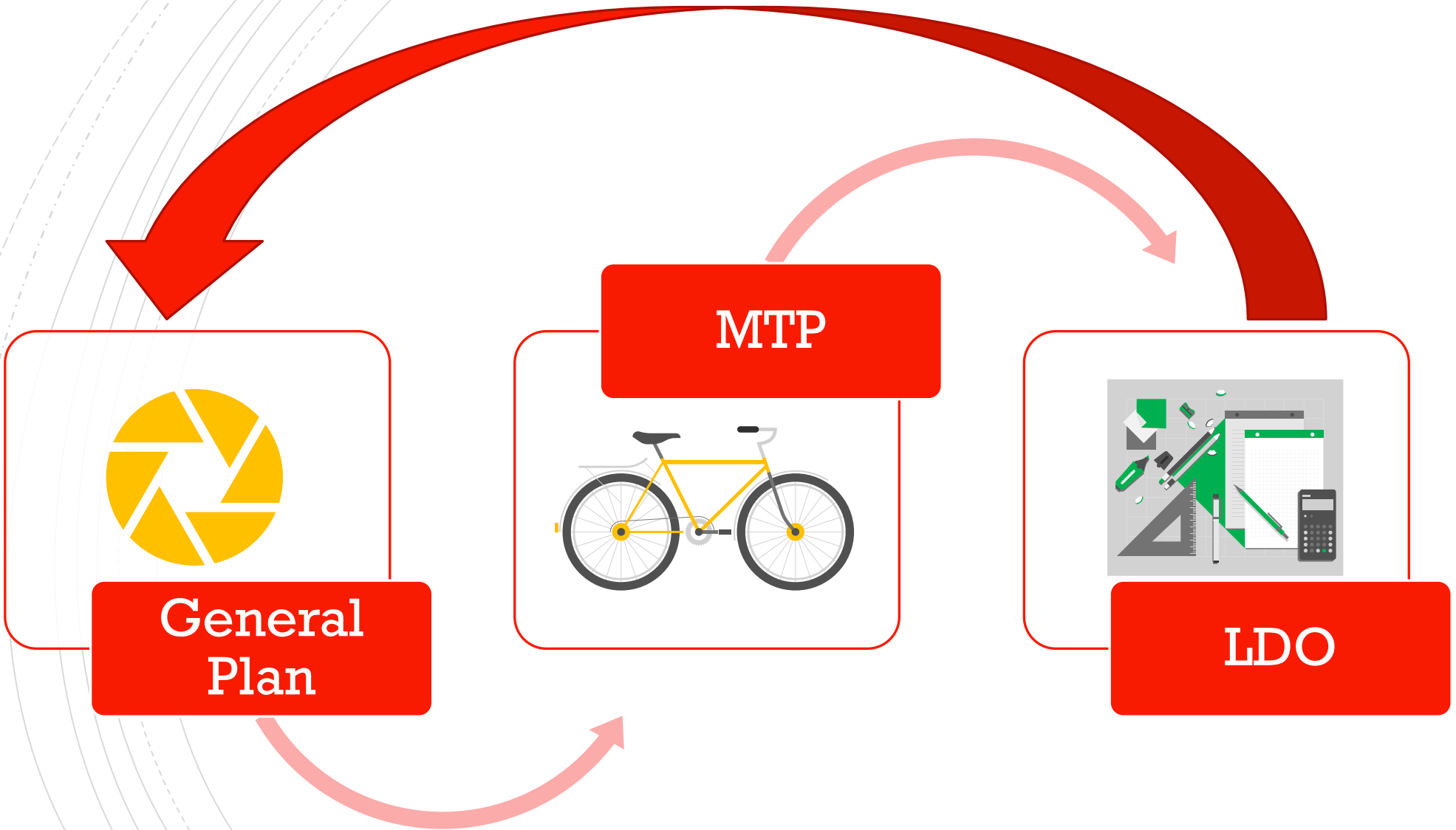
- Why update the MTP?
- Thompson's Station & Spring Hill transportation coordination
- TDOT Draft Plans for 31 Widening



## Plans are Foundation for Regulations

Need to ensure our plans establish the guiding policies in order to codify our shared vision for the Town in regulatory form.



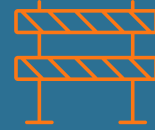


**General  
Plan**

**MTP**

**LDO**

MTP



Lewisburg Pike

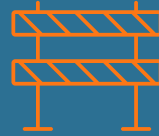


Multimodal Focus



Realistic cost estimates &  
project prioritization

MTP



## Lewisburg Pike

- I-65 Interchange Corridor Impacts
- Growth/Development pressures
- Change to commuting & travel patterns
- Be ready with Town's vision & expectations for this corridor before development starts in earnest

MTP



## Multimodal Focus

- Interconnected, bikeable, & walkable
- Links between Town system & subdivisions
- Look towards safety & health of Town
- We can make Thompson's Station the most pedestrian friendly community in TN



MTP

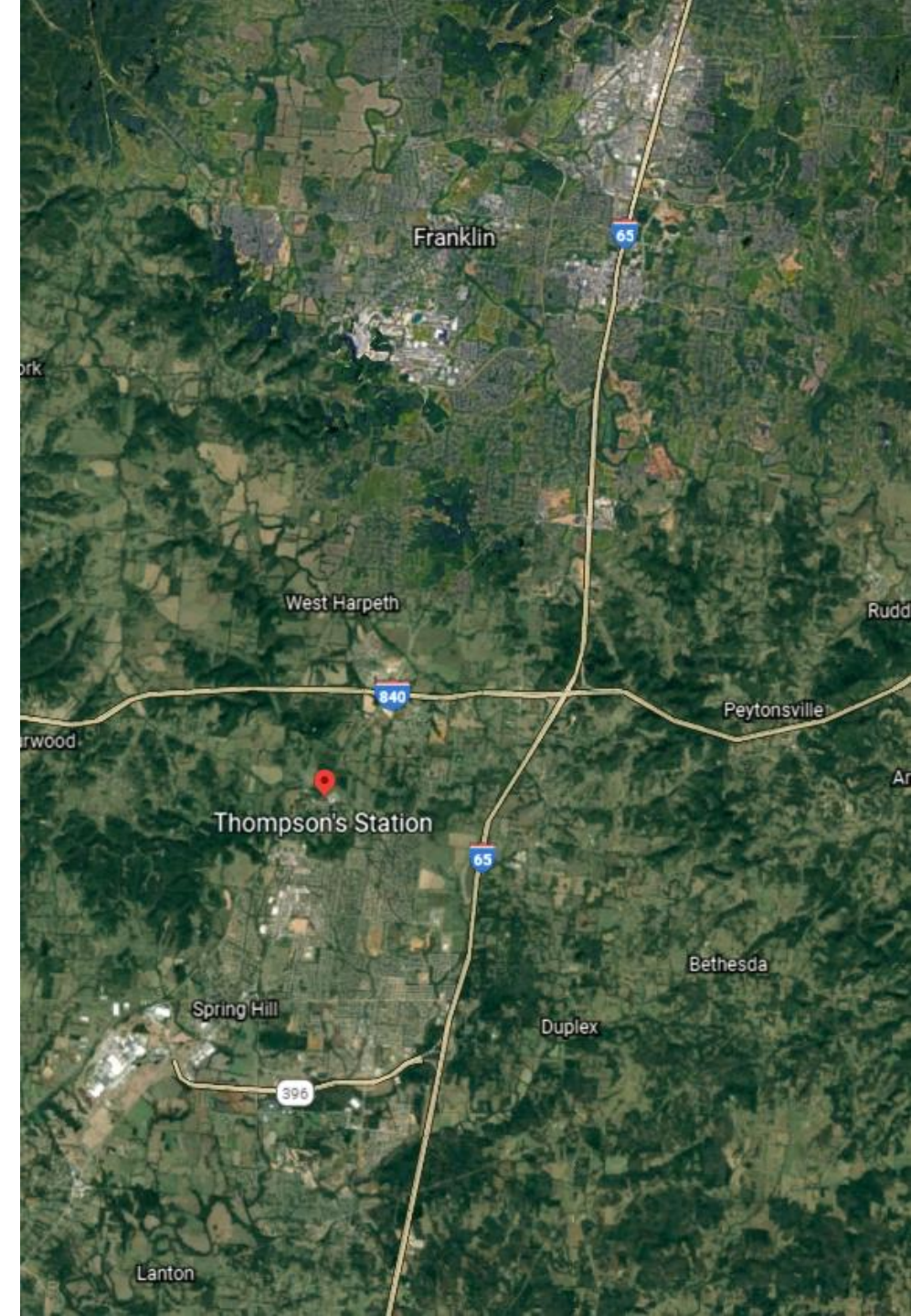


## Realistic Cost Estimates & Project Prioritization

- CIP Tool
- Partnerships for sharing costs
- Where Planning meets Budgeting

## Traffic issues do not stop at the Town Limits

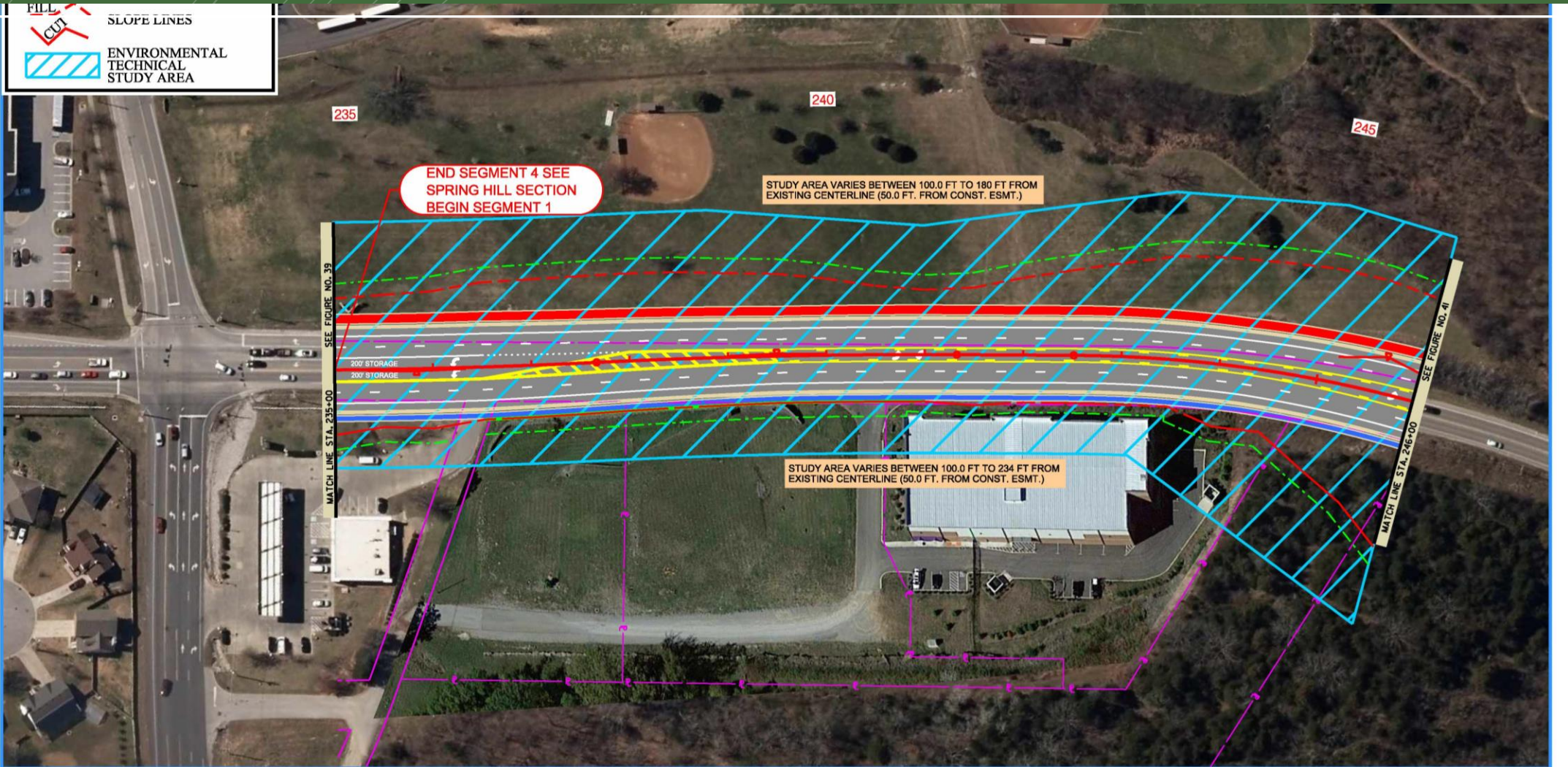
- Coordination with Williamson County, City of Franklin, and City of Spring Hill Major Thoroughfare Plans is important.
- US 31 and US 431 are regional routes that carry traffic to and from other cities, employment centers, shopping destinations, and entertainment venues. This will only grow more important as the region continues to grow.
- Buckner Road and the new interchange are going to have traffic impacts on Thompsons Station, how do we prepare for that?
- Pedestrian and Greenway facilities do not have to stop at Town Limits, is there potential for partnerships between communities to create an even larger network?



**FILL**  
**CUT**

**SLOPE LINES**

**ENVIRONMENTAL TECHNICAL STUDY AREA**



235

240

245

END SEGMENT 4 SEE  
SPRING HILL SECTION  
BEGIN SEGMENT 1

STUDY AREA VARIES BETWEEN 100.0 FT TO 180 FT FROM  
EXISTING CENTERLINE (50.0 FT. FROM CONST. ESMT.)

SEE FIGURE NO. 39  
MATCH LINE STA. 235+00

SEE FIGURE NO. 41  
MATCH LINE STA. 246+00

STUDY AREA VARIES BETWEEN 100.0 FT TO 234 FT FROM  
EXISTING CENTERLINE (50.0 FT. FROM CONST. ESMT.)



**ENVIRONMENTAL TECHNICAL STUDY AREA**

SR-6 (US-31, COLUMBIA PIKE)  
FROM DUPLEX ROAD IN SPRING HILL TO NEAR TOLL GATE BLVD IN THOMPSON'S STATION

STATE OF TENNESSEE  
DEPARTMENT OF TRANSPORTATION  
STRATEGIC TRANSPORTATION  
INVESTMENTS DIVISION

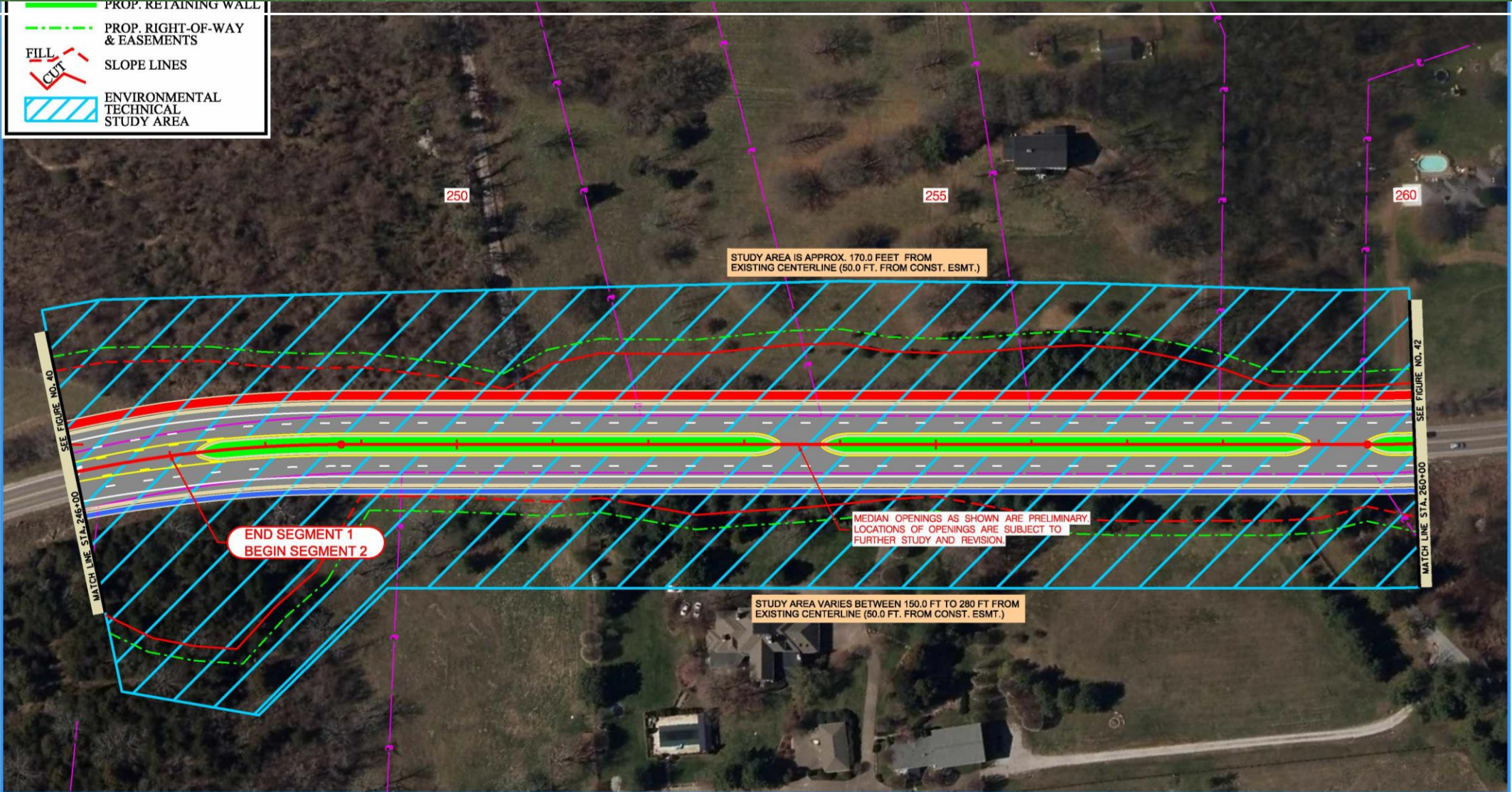
**CONCEPTUAL LAYOUT**

2:26:21 PM  
K:\rcooflaw\01\johnr\ehm\cma5268\ETSA\_040.dwg

TITLE  
STRATA  
DATE  
FILE #

PROP. RETAINING WALL  
PROP. RIGHT-OF-WAY & EASEMENTS  
SLOPE LINES  
ENVIRONMENTAL TECHNICAL STUDY AREA

FILL  
CUT



STUDY AREA IS APPROX. 170.0 FEET FROM EXISTING CENTERLINE (50.0 FT. FROM CONST. ESMT.)

END SEGMENT 1  
BEGIN SEGMENT 2

MEDIAN OPENINGS AS SHOWN ARE PRELIMINARY. LOCATIONS OF OPENINGS ARE SUBJECT TO FURTHER STUDY AND REVISION.

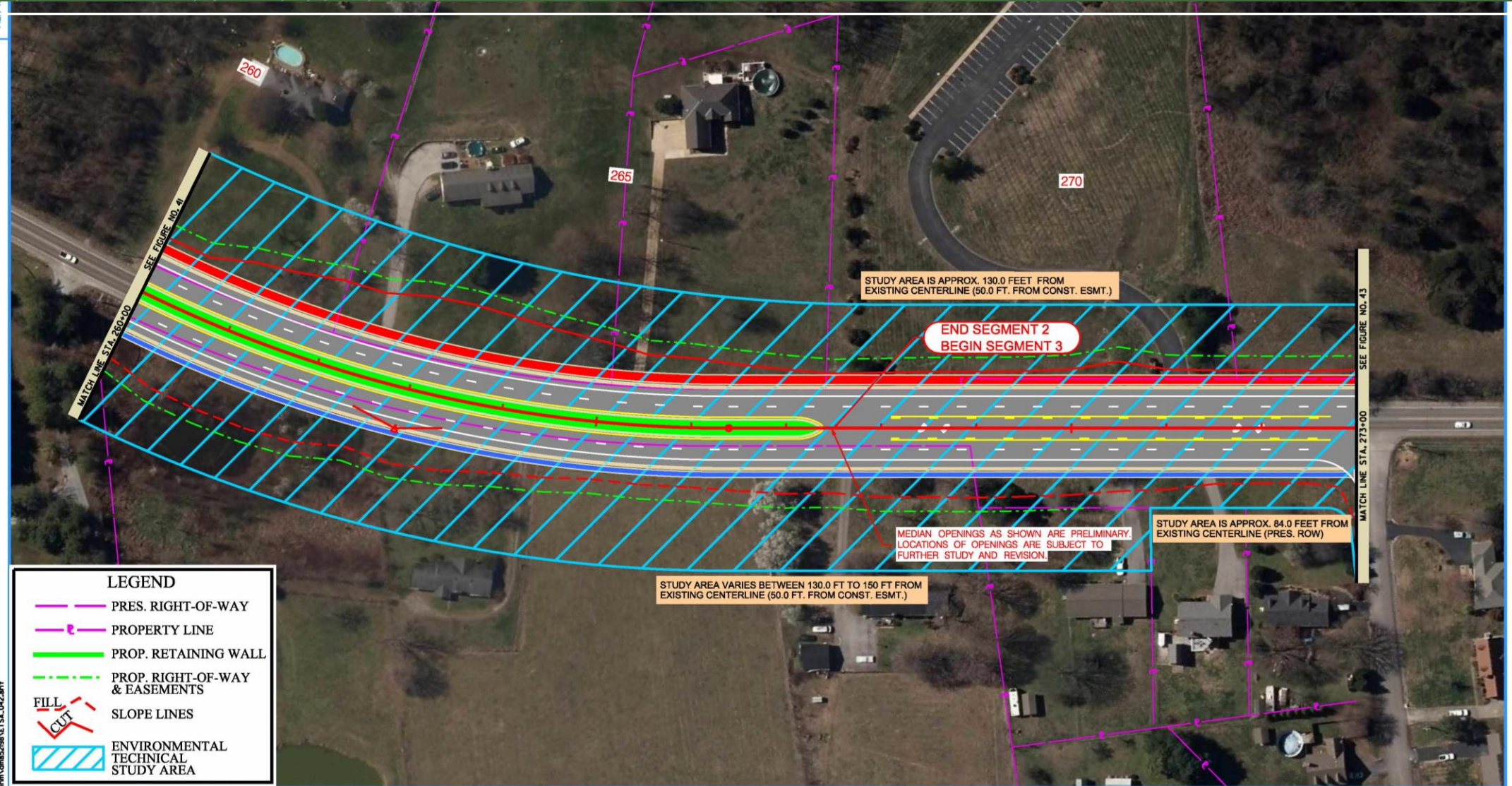
STUDY AREA VARIES BETWEEN 150.0 FT TO 280 FT FROM EXISTING CENTERLINE (50.0 FT. FROM CONST. ESMT.)

001\john\c\dm\Gms5288\ETS4\_04.dwg

0' 100' 200' 300'

# ENVIRONMENTAL TECHNICAL STUDY AREA

TITLE: STRATEGIC INVESTMENTS  
 DATE: 04/20/2011  
 FILE: 11



**LEGEND**

- PRES. RIGHT-OF-WAY
- PROPERTY LINE
- PROP. RETAINING WALL
- PROP. RIGHT-OF-WAY & EASEMENTS
- SLOPE LINES
- ENVIRONMENTAL TECHNICAL STUDY AREA

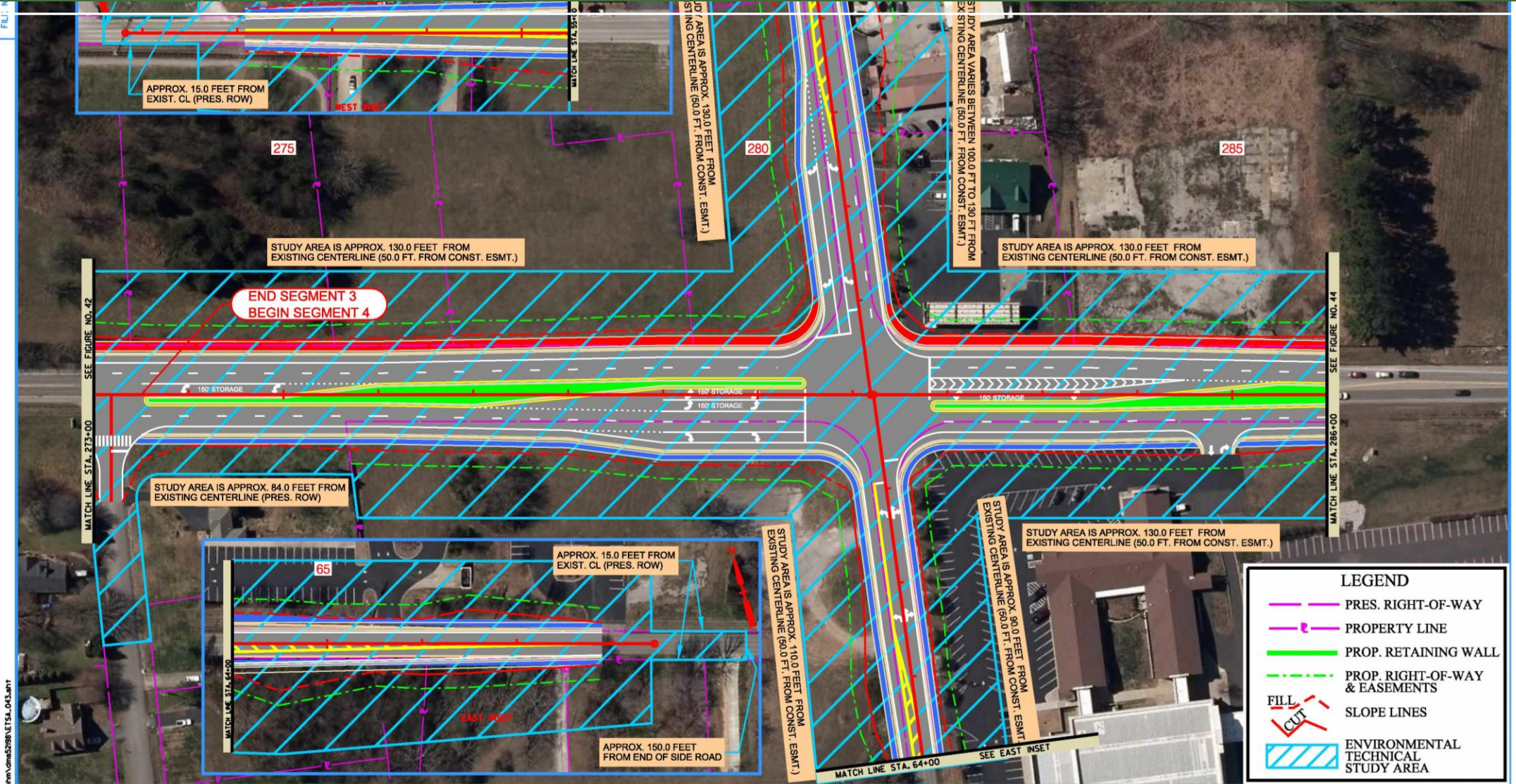
**FILL**  
**CUT**

0' 100' 200' 300'

**ENVIRONMENTAL TECHNICAL STUDY AREA**

STATE OF TENNESSEE  
 DEPARTMENT OF TRANSPORTATION  
 STRATEGIC TRANSPORTATION  
 INVESTMENTS DIVISION

TITLE: STRATA ROAD IMPROVEMENTS FULL PLAN



0' 100' 200' 300'

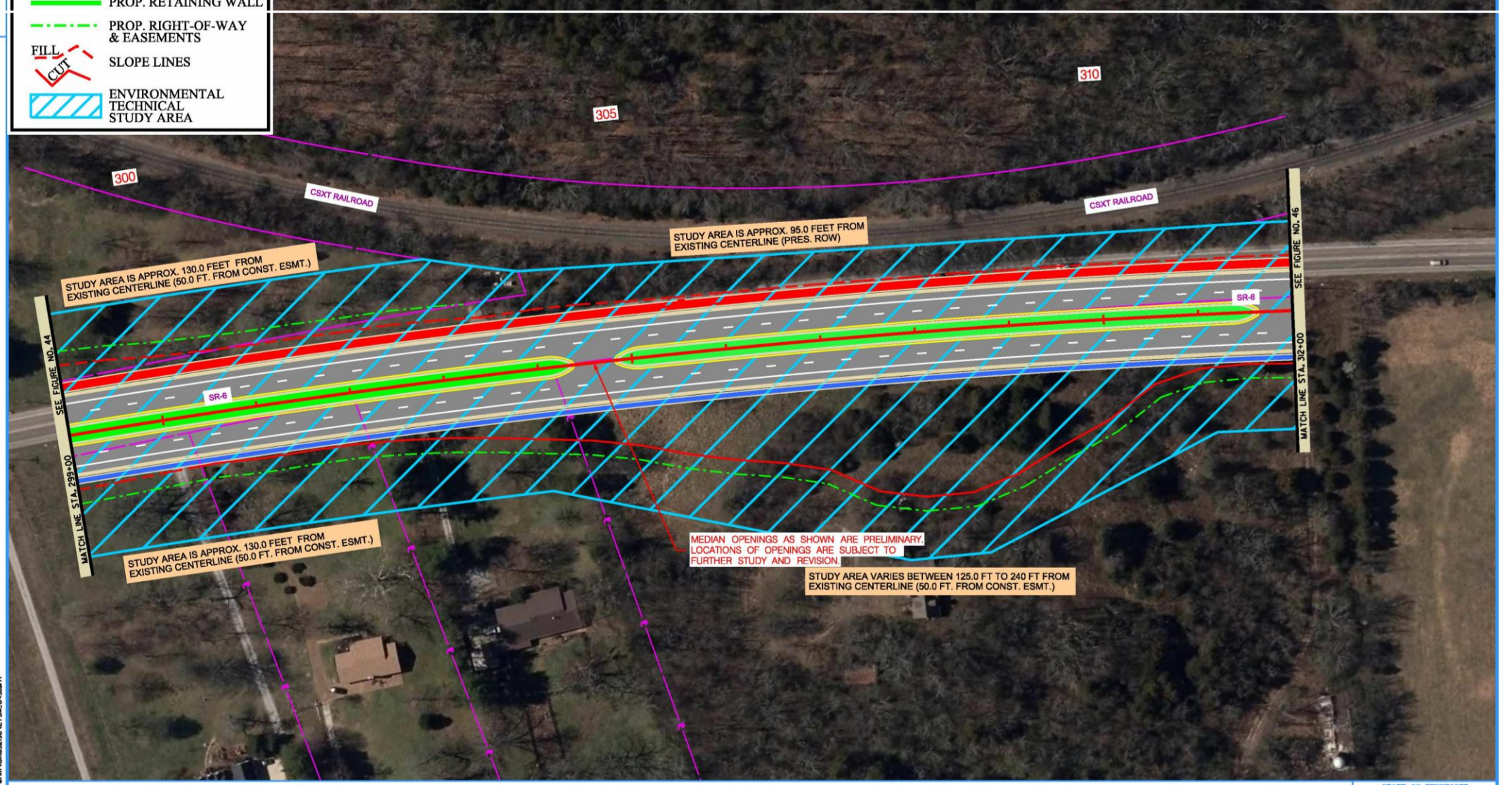
ENVIRONMENTAL TECHNICAL STUDY AREA

STATE OF TENNESSEE  
DEPARTMENT OF TRANSPORTATION  
STRATEGIC TRANSPORTATION  
INVESTMENTS DIVISION

TITLE: STRATEGIC TRANSPORTATION INVESTMENTS DIVISION

**LEGEND**

- PROP. RETAINING WALL
- PROP. RIGHT-OF-WAY & EASEMENTS
- FILL
- CUT
- SLOPE LINES
- ENVIRONMENTAL TECHNICAL STUDY AREA



STUDY AREA IS APPROX. 130.0 FEET FROM EXISTING CENTERLINE (50.0 FT. FROM CONST. ESMT.)

STUDY AREA IS APPROX. 95.0 FEET FROM EXISTING CENTERLINE (PRES. ROW)

STUDY AREA IS APPROX. 130.0 FEET FROM EXISTING CENTERLINE (50.0 FT. FROM CONST. ESMT.)

MEDIAN OPENINGS AS SHOWN ARE PRELIMINARY. LOCATIONS OF OPENINGS ARE SUBJECT TO FURTHER STUDY AND REVISION.

STUDY AREA VARIES BETWEEN 125.0 FT TO 240 FT FROM EXISTING CENTERLINE (50.0 FT. FROM CONST. ESMT.)

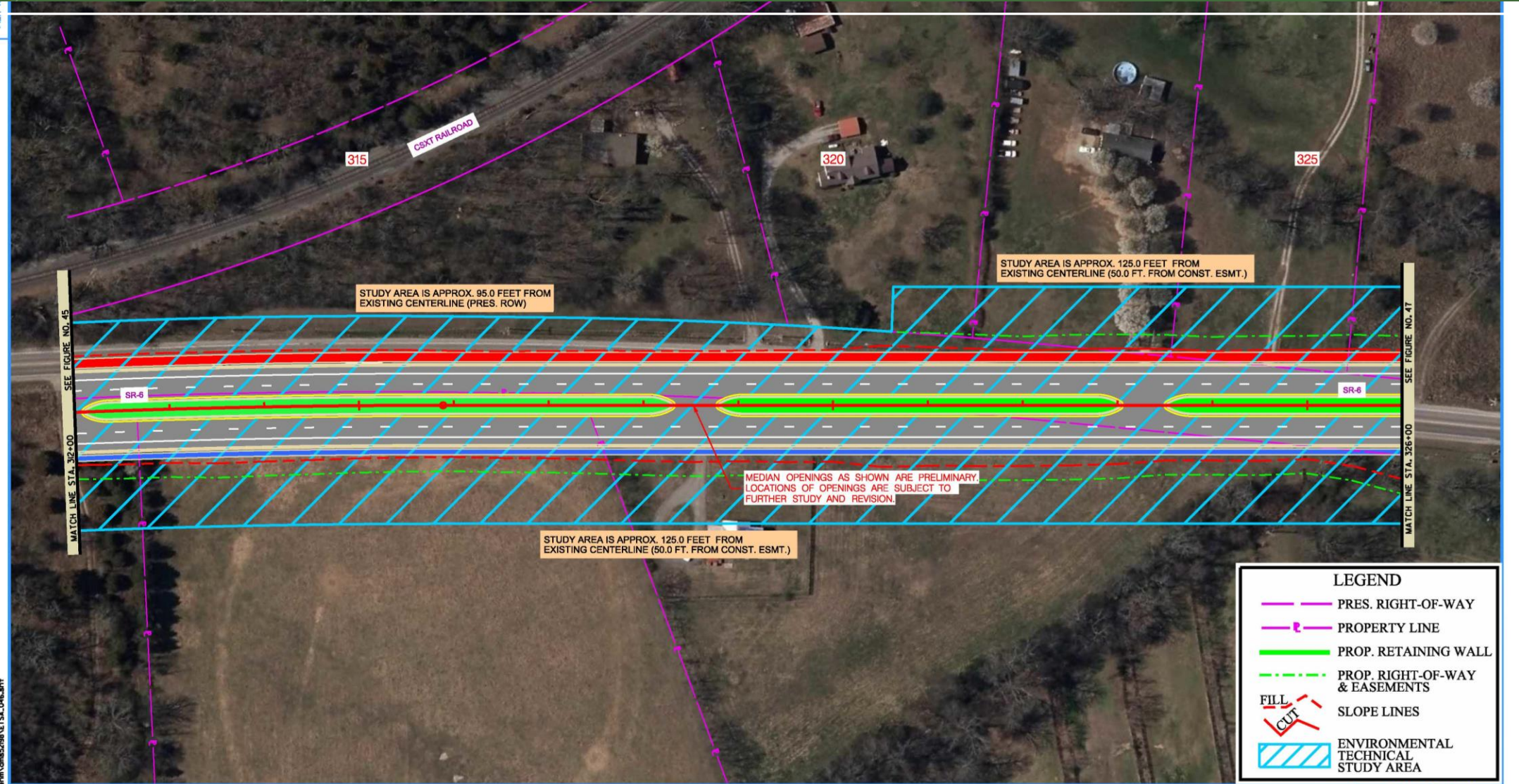
SEE FIGURE NO. 44  
MATCH LINE STA. 299+00

SEE FIGURE NO. 46  
MATCH LINE STA. 312+00

001 Job: 20180101\Gma5288\ETS\A\_045.dwg

0' 100' 200' 300'

# ENVIRONMENTAL TECHNICAL STUDY AREA



01:johnr@dm.com:288:VETS:046.dwg

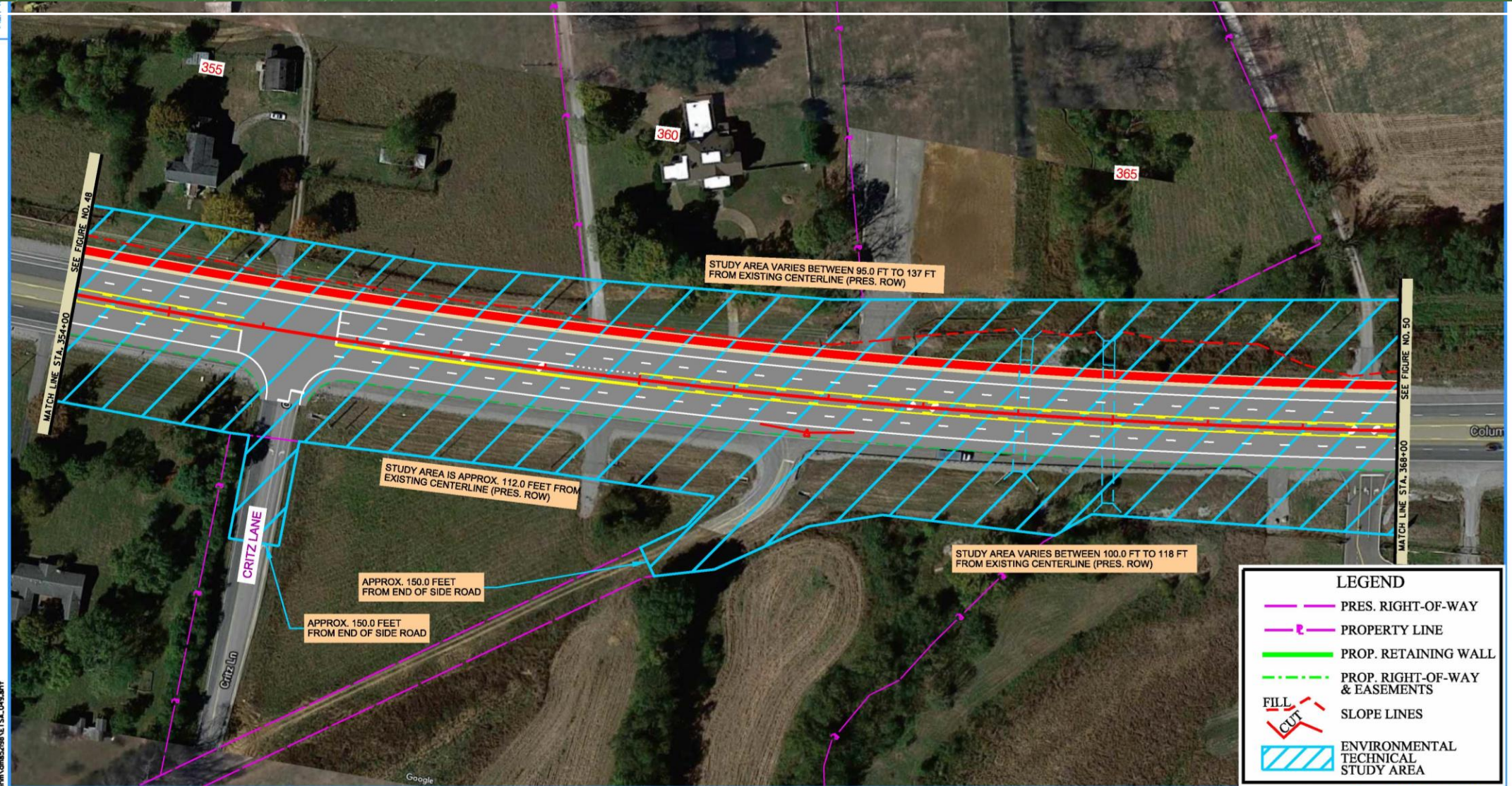
0' 100' 200' 300'

ENVIRONMENTAL TECHNICAL STUDY AREA









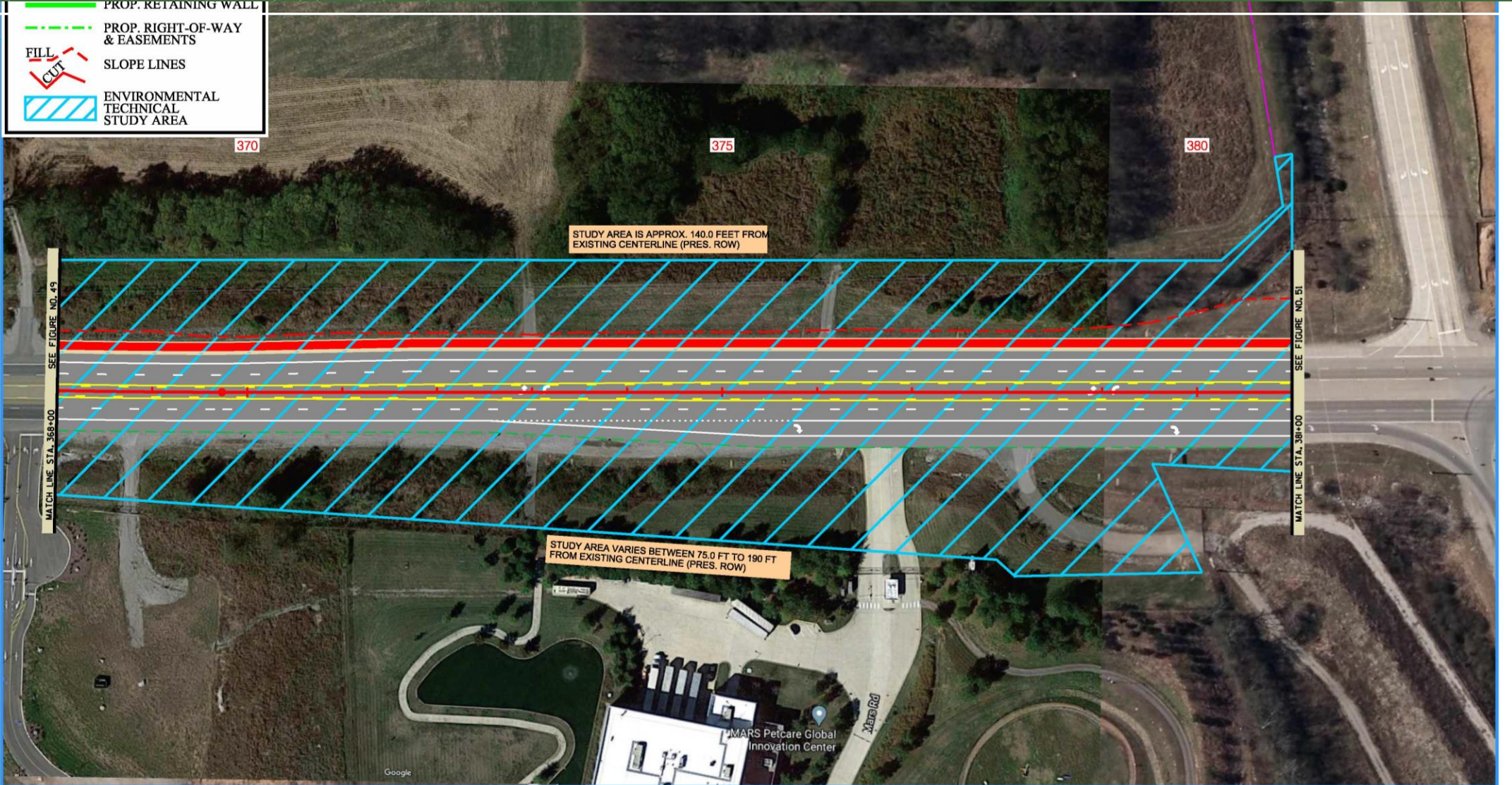
**LEGEND**

- PRES. RIGHT-OF-WAY
- PROPERTY LINE
- PROP. RETAINING WALL
- PROP. RIGHT-OF-WAY & EASEMENTS
- SLOPE LINES
- ENVIRONMENTAL TECHNICAL STUDY AREA

ENVIRONMENTAL TECHNICAL STUDY AREA

TITLE  
STRATA  
INCHES  
FEET

PROP. RETAINING WALL  
PROP. RIGHT-OF-WAY & EASEMENTS  
SLOPE LINES  
ENVIRONMENTAL TECHNICAL STUDY AREA



STUDY AREA IS APPROX. 140.0 FEET FROM EXISTING CENTERLINE (PRES. ROW)

STUDY AREA VARIES BETWEEN 75.0 FT TO 190 FT FROM EXISTING CENTERLINE (PRES. ROW)

MATCH LINE STA. 368+00 SEE FIGURE NO. 49

MATCH LINE STA. 38+00 SEE FIGURE NO. 51

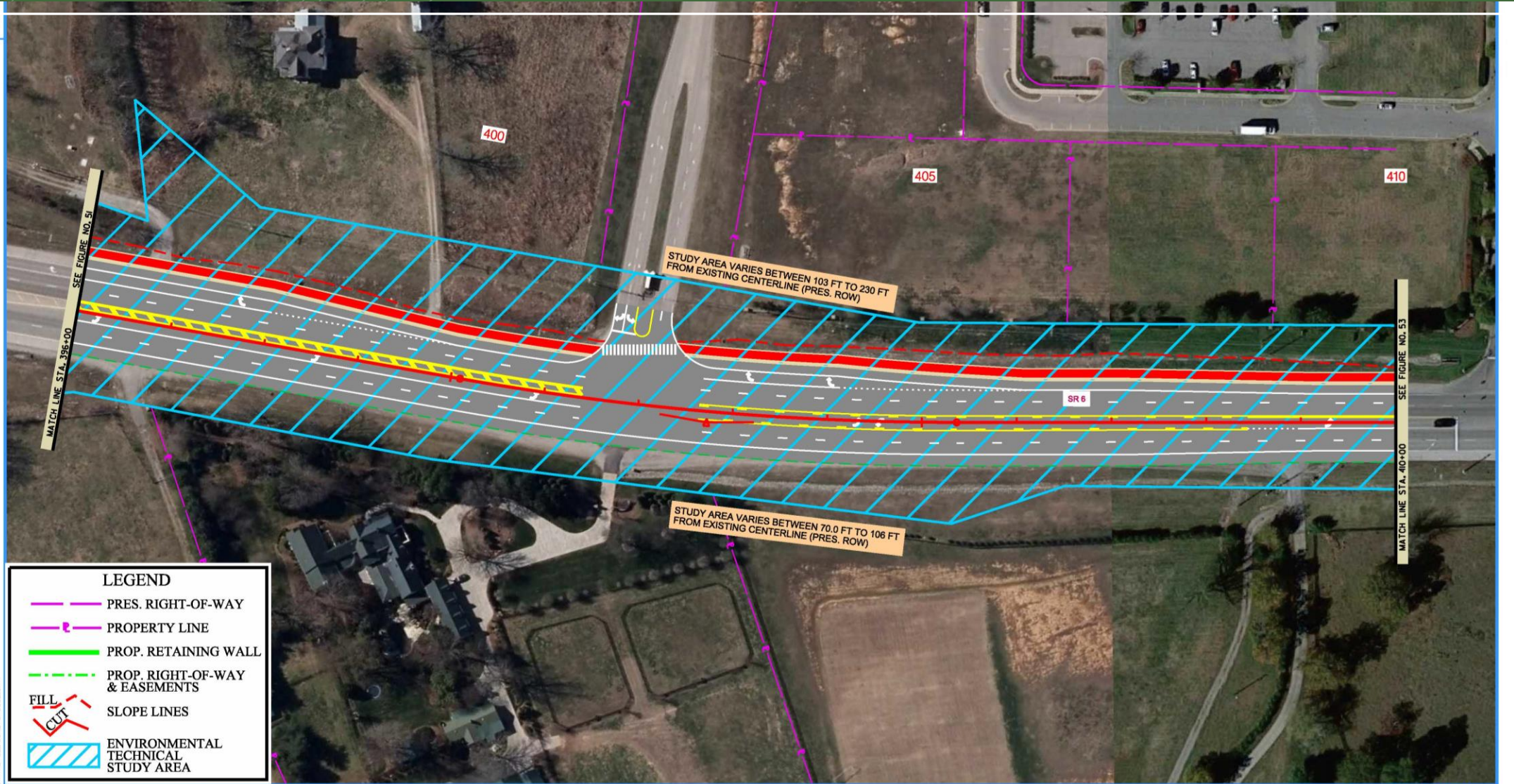
001 John... 050.dwg

0' 100' 200' 300'

# ENVIRONMENTAL TECHNICAL STUDY AREA

STATE OF TENNESSEE  
DEPARTMENT OF TRANSPORTATION  
STRATEGIC TRANSPORTATION  
INVESTMENTS DIVISION





**LEGEND**

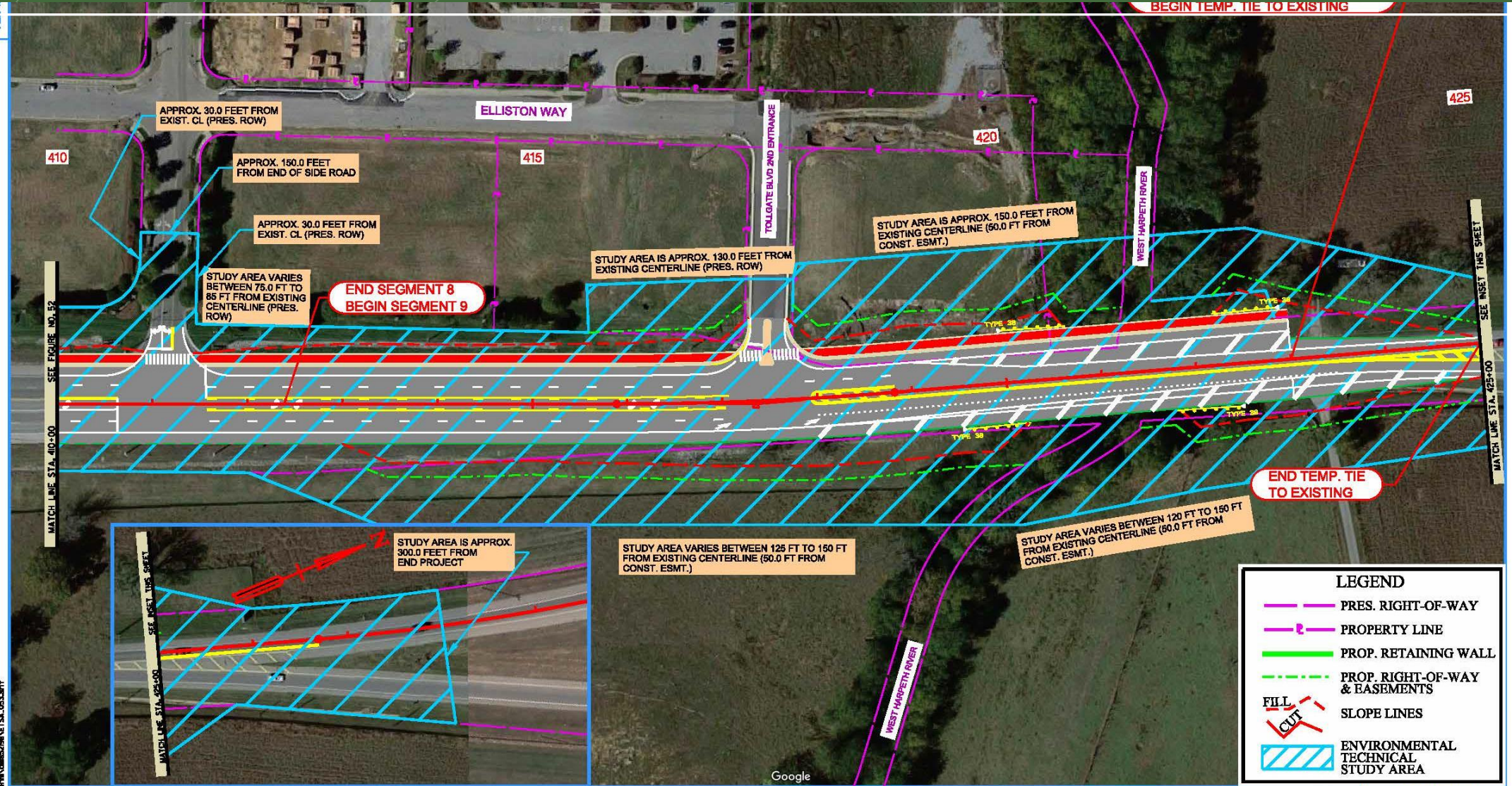
- PRES. RIGHT-OF-WAY
- PROPERTY LINE
- PROP. RETAINING WALL
- - - PROP. RIGHT-OF-WAY & EASEMENTS
- - - SLOPE LINES
- / \ FILL / CUT
- / \ ENVIRONMENTAL TECHNICAL STUDY AREA

D:\johnson\pdm\Gma5298\ETS\A\_052.dwg

0' 100' 200' 300'

**ENVIRONMENTAL TECHNICAL STUDY AREA**

T: JAW  
S: STRA TCR  
W: ES  
P: L: N



MATCH LINE STA. 410+00 SEE FIGURE NO. 52

MATCH LINE STA. 425+00 SEE INSET THIS SHEET

MATCH LINE STA. 425+00 SEE INSET THIS SHEET

**END SEGMENT 8  
BEGIN SEGMENT 9**

**END TEMP. TIE  
TO EXISTING**

LEGEND	
	PRES. RIGHT-OF-WAY
	PROPERTY LINE
	PROP. RETAINING WALL
	PROP. RIGHT-OF-WAY & EASEMENTS
	SLOPE LINES
	ENVIRONMENTAL TECHNICAL STUDY AREA

40' Johnson, P. M. 2/28/2018 VETS.A. 03.Lant

0' 100' 200' 300'

**ENVIRONMENTAL TECHNICAL STUDY AREA**

STATE OF TENNESSEE  
DEPARTMENT OF TRANSPORTATION  
STRATEGIC TRANSPORTATION  
IMPROVEMENTS DIVISION

# Discussion



**What are your priorities?**



**What parts of transportation  
do we need to focus on?**