

**Town of Thompson's Station
Parks Board
Meeting Agenda
November 7, 2017**

Meeting Called To Order

New Business:

1. Consideration Of The Minutes Of The September 5, 2017 Regular Meeting

Documents:

[SEPTEMBER 2017 MINUTES.PDF](#)
[MEMO 11072017.PDF](#)

2. Budget Report

3. Preservation Park Updates

- Natural Surface Trails
- Amphitheater
- Signage

Documents:

[PARK SIGN MAP.PDF](#)
[PARK EMERGENCY SERVICES MAP.PDF](#)

4. Firetruck - Plan For Future Use Of Antique Firetruck

Adjourn

*This meeting will be held at 6:00 p.m. in the Thompson's Station's Community
Center
1555 Thompson's Station Road West*

Minutes of the Meeting
of the Municipal Parks and Recreation Advisory Board
of the Town of Thompson 's Station, Tennessee
September 5 , 2017

Call to Order:

The meeting of the Parks and Recreation Advisory Board of the Town of Thompson's Station was called to order at 6:00 p.m. on the 5th day of September, 2017 at the Thompson's Station Community Center with the required quorum. Members, aldermen and staff in attendance were: Chairman Jim Van Vleet; Alderman Brian Stover; Board Member Sheila Shipman; Board Member David Coleman; Board Member Layla Bell; Board Member Becky Clark; and Town Planner Wendy Deats. Board Member Kreis White was unable to attend.

Business:

- 1. Approval of Minutes** – The minutes of the August 1st regular meeting were submitted.

Board Member Shipman made a motion to approve the minutes of the August 1st, 2017 meeting as submitted. The motion was seconded and carried unanimously.

- 2. Budget Report** – The budget has not changed since the August 1st, 2017 meeting. There is still \$15,352 in unencumbered funds. Two payments have been made to Mr. Richards, so that will be reflected in the next report. We currently have \$25,600 for the tables, benches, etc. The unpaved pedestrian trail has about \$43,800 left in it. The amphitheater has \$47,300 the Equestrian loop has about \$18,000 and Middle TN Electric project has \$12,538.

Board Member Stover made a motion to approve the budget as presented. The motion was seconded and carried by all.

- 3. Hodgson-Douglas Contract for Design** - Mrs. Deats gave a review of her report and recommended that the Commission approve the contract modified to eliminate some of the improvements that staff is available to complete in house. This change reduces the contract amount to \$26,200. Mrs. Deats also stated that the budget has \$25,610 for tables, benches and trash cans. She recommended moving \$15,610 of the funds for benches, tables and trash cans to the unencumbered funds leaving \$10,000 for future purchases of these items.

Board Member White made a motion to accept the Hodgson-Douglas contract with an amount not to exceed \$27,000. The motion was seconded and carried by all.

Board Member White made a motion to amend the budget and move \$15,610 from tables, benches, etc. to unencumbered funds. The motion was seconded and carried by all.

- 4. Cycle for Life – (Dustin Tracy).**

Board Member Clark made a motion to approve the Cycle for Life event with the contingencies that trash is picked up, and leave restroom facilities clean. The motion was seconded and carried by all.

- 5. Dog N Pony Show Update – (Jack Davis)**

Jack Davis came forward to give an update about the Dog N Pony Show and the 5 K race.

Minutes of the Meeting
of the Municipal Parks and Recreation Advisory Board
of the Town of Thompson 's Station, Tennessee
September 5 , 2017

6. Trail Naming –

After discussion, Commissioner White made a motion to rename Trail 1 to Battlefield Trail and Trail 2 to Depot Trail. The motion was seconded and carried by all.

Chairman VanVleet requested that the Maintenance crew weed eat around the natural fencing and also that they make two passes with the mower on all trails.

Adjourn.

The meeting was adjourned at 6:37 p.m.

Jim Van Vleet, Chairman

Phone: (615) 794-4333
Fax: (615) 794-3313
www.thompsons-station.com



1550 Thompson's Station Road W.
P.O. Box 100
Thompson's Station, TN 37179

DATE: November 3, 2017
TO: Parks and Recreation Advisory Board
FROM: Wendy Deals, Town Planner
SUBJECT: Report 11/7/2017

Budget –

Staff is working on an update to the format of the budget. Once the updated budget is complete, it will be sent to the Board.

Preservation Park –
Natural Surface Trails

Bob Richards completed phase 2 of the natural surface trail at Preservation Park and has been paid in full. Phase 1 (Depot Trail) is 1.2 miles and phase 2 (Battlefield Trail) is 1.1 miles for a total of 2.3 natural surface trails in the park.

Amphitheater

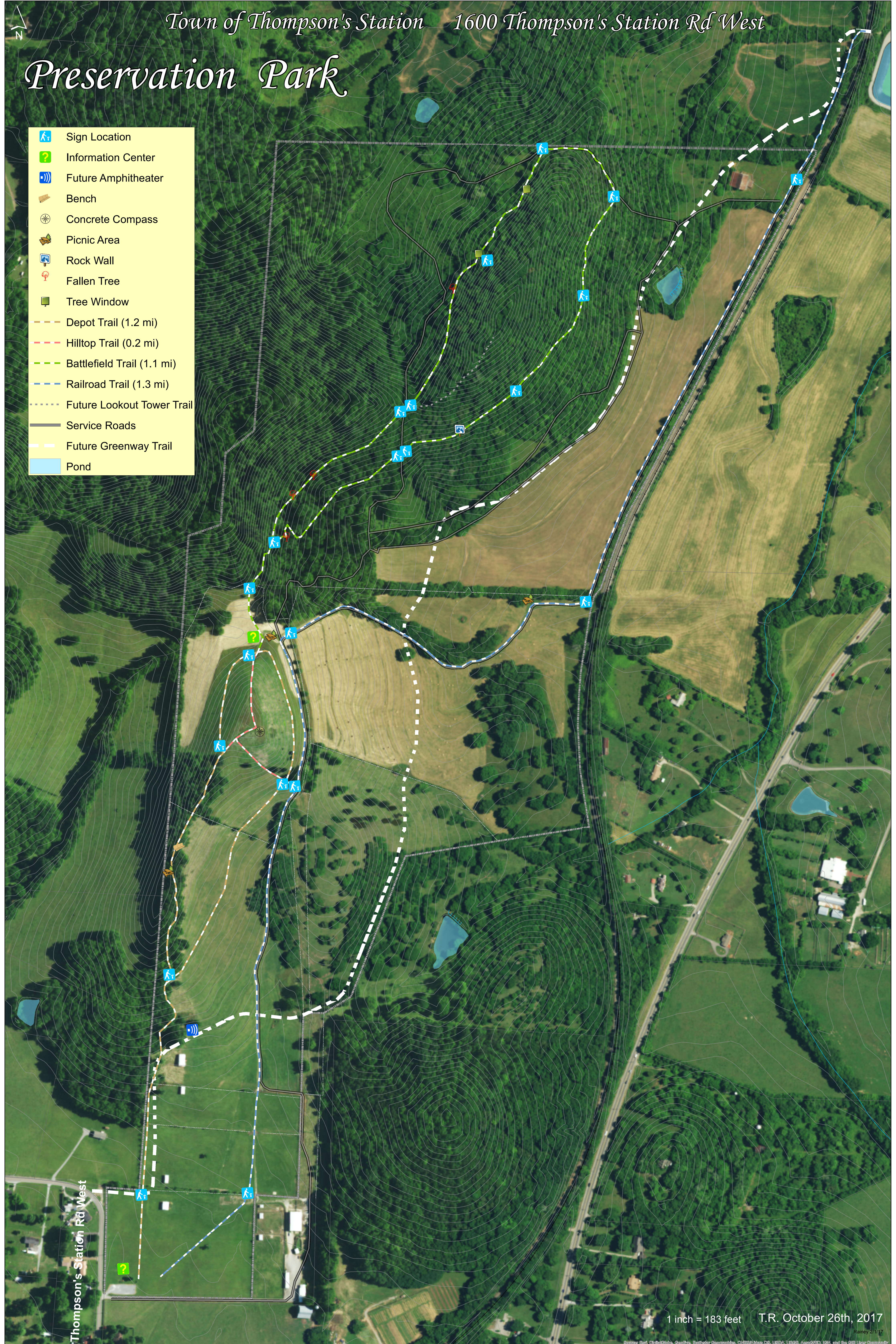
The contract is signed with Hodgson Douglas for the design of the amphitheater and reuse of the outbuildings at the park. Staff had a kick off meeting with the consulting team who has started working on the project.

Signage

Staff is working on obtaining some bids for the creation of an entry sign at the park entrance. In addition, staff is working on the design of the trail markers which will be consistent with the signage along the greenway trail. The attached park map identifies the locations of the signage throughout the trail. The Town has been contacted by the rescue squad about the location of trails therefore, staff has created an emergency services map (see attached) that will be sent to them.

Preservation Park

-  Sign Location
-  Information Center
-  Future Amphitheater
-  Bench
-  Concrete Compass
-  Picnic Area
-  Rock Wall
-  Fallen Tree
-  Tree Window
-  Depot Trail (1.2 mi)
-  Hilltop Trail (0.2 mi)
-  Battlefield Trail (1.1 mi)
-  Railroad Trail (1.3 mi)
-  Future Lookout Tower Trail
-  Service Roads
-  Future Greenway Trail
-  Pond











Thompson's Station Rd West

Town of Thompson's Station Preservation Park

1600 Thompson's Station Rd West

Emergency Services Access Map



-  Sign Location
-  Depot Trail (1.2 mi)
-  Hilltop Trail (0.2 mi)
-  Battlefield Trail (1.1 mi)
-  RR Trail (1.3 mi)
-  Service Roads
-  Future Greenway Trail
-  Fence Lines

Trail Access at
this location

Narrow/Rough Road -
Vehicles Use Caution

Locked
Gate

Gate

Thompson's Station Rd West

1 inch = 183 feet April 4th, 2017

Rainey 2/1/17

Source: Esri, DigitalGlobe, GeoEye, Earthstar Geographics, CNES/Airbus DS, USDA, AeroGRID, IGN, SDA, Contour